

TO WHOMSOEVER IT MAY CONCERN

Introduction & Credentials of the Company.

We would like to introduce ourselves as a leading business house for cement industries in various works, with adequate manpower, machinery & infrastructure, with various group of company, known as **Durga Group of Companies** details are given below:-

1. **Durga Carriers Pvt. Ltd.**:- We are working in this company basically cement & raw material transportation, rake handling for cement (Packed) & loose material in various siding, with various industries.
2. **Durga Continental Pvt. Ltd.** :- We are working in this company basically, civil construction and trading business.
3. **Durga Hitech Projects Pvt Ltd.**:- We are working in this company basically Railway construction like:- P way, OHE, S&T with L&T Ecc division. We also worked in HT line shifting Like- 33 kv & 11 Kv lines.
4. **Durga Gypsum Ventures Pvt. Ltd.**:- We are working in this company Gypsum business, Like:- Chemical, Phospho, Mineral, Neutralised & Synthetic Gypsum etc., formally this company known as 'Durga Corporate Consultancy Pvt. Ltd.', In this company we did Internal shifting & handling of Coal, Clinker, Lime Stone etc.

Our Company based at **Baloda Bazar, Chhattisgarh** we are well aware about the political and geographical condition of the state. We have all statutory registrations with appropriate government agency, like: - PF, TIN, Excise & vat Etc.

We will be happy to receive your offer, order, quotation related to our scope of work. We are very much keen to be associated with your esteemed organisation.

Thanking you,

Regards

For, Durga Group of Companies.

COMPANIES :

DURGA CARRIERS PVT. LTD.
PAN NO. : AAACD8178P
TIN NP. : 22512500507

DURGA HITECH PROJ. PVT. LTD.
PAN NO. : AADCDS242K
TIN NO. : 22841802459

DURGA CONTINENTAL PVT. LTD.
PAN NO. : AACCD0712H
TIN NO. : 22841802459

GURGA GYPSUM VENTURES PVT. LTD.
DURGA CORPORATE PVT. LTD.
PAN NO. : AACCD7736R

WORK HANDLE BY DURGA GROUP OF COMPANIES:

- Transportation Work (Cement/Gypsum/Iron Ore/Clinker/Coal and other raw materials).
- Civil Work (Road and Buildings).
- Railway Projects – Earth work, P-way, Telecom & OHE on turnkey basis.
- Raw material trading – Phospho/Chemical Gypsum/ Iron fines/ Important Coal & Gypsum/Bauxite/Sand.
- Trading Work- Gypsum/Phospho Gypsum/Iron Ore/Coal Trading.
- Internal Raw Material Handling.
- Rake Handling Work- Loading/ Unloading and Transporting.
- Petrol Pumps.
- Ware Housing.
- Real Estate Business.
- Heavy Electrical Power Line transmission.
- Government *Liasoning* and facilitating for land etc.

COMPANIES :

DURGA CARRIERS PVT. LTD.
PAN NO. : AAACD8178P
TIN NP. : 22512500507

DURGA HITECH PROJ. PVT. LTD.
PAN NO. : AADC05242K
TIN NO. : 22841802459

DURGA CONTINENTAL PVT. LTD.
PAN NO. : AACCD0712H
TIN NO. : 22841802459

DURGA GYPSUM VENTURES PVT. LTD.
DURGA CORPORATE PVT. LTD.
PAN NO. : AACCD7736R

TABLE OF CONTENTS

S.NO	TITLE	PG NO.
1.	Company Policy	04
2.	Code of Ethics & Statement of Conduct	04
3.	Organization & Its Sister Concerns:	05
4.	Financial Status	05
5.	Work Done By All Companies	06-08
5.1	Durga Carriers Pvt. Ltd.	06-08
5.2	Durga Continental Pvt. Ltd.	06-08
5.3	Durga Constructions	06-08
5.4	Durga Gypsum Ventures Pvt. Ltd.	06-08
5.5	Durga Hitech Projects Pvt. Ltd.	06-08
6.	Board of Directors	09
7	Head Office	10
8	Branch Offices	11
9	Fleet List of Owned Company	Annex (1)
10	List Of Equipments	Annex (2)
11	Staff Details	Annex (3)
12	Client Details	Annex (4)
13	Contract & Work Executed	Annex (5)

COMPANIES :

DURGA CARRIERS PVT. LTD.
PAN NO. : AAACD8178P
TIN NP. : 22512500507

DURGA HITECH PROJ. PVT. LTD.
PAN NO. : AADC05242K
TIN NO. : 22841802459

DURGA CONTINENTAL PVT. LTD.
PAN NO. : AACCD0712H
TIN NO. : 22841802459

GURGA GYPSUM VENTURES PVT. LTD.
DURGA CORPORATE PVT. LTD.
PAN NO. : AACCD7736R

1. COMPANY POLICY:

DURGA GROUP OF COMPANIES considers quality to be the key success factor. Our Service is focused on our customers, their needs & their satisfaction. Continuous efforts shall be made for improvement in service for meeting customer's expectation at any point of time.

Regularly reviewing our performance & identifying the potential area of development through team work shall be our main quality objective.

Team Work, Reliability, Consistency, Commitment, Safety, Environmental upkeep, Training of our employees & building social images will be guiding valuing in all facets of our functioning.

2. CODE OF ETHICS & STATEMENT OF CONDUCT:

Durga Group Of Companies believes in the highest ethical standards. We demonstrate the beliefs of our company through our commitment.

To Our Employees, We are committed to just management & equality for all providing a safe & healthy workplace & respecting dignity due to all human beings.

To Our Customer, We are committed to provide reliable services at a fair price that are delivered on time & within budget.

To Our Community, In which we live, we are committed to the responsible neighbors reflecting all aspects if good citizenship.

To Our Suppliers, We are committed towards fair competition & the sense of responsibility required of a good customer.

COMPANIES :

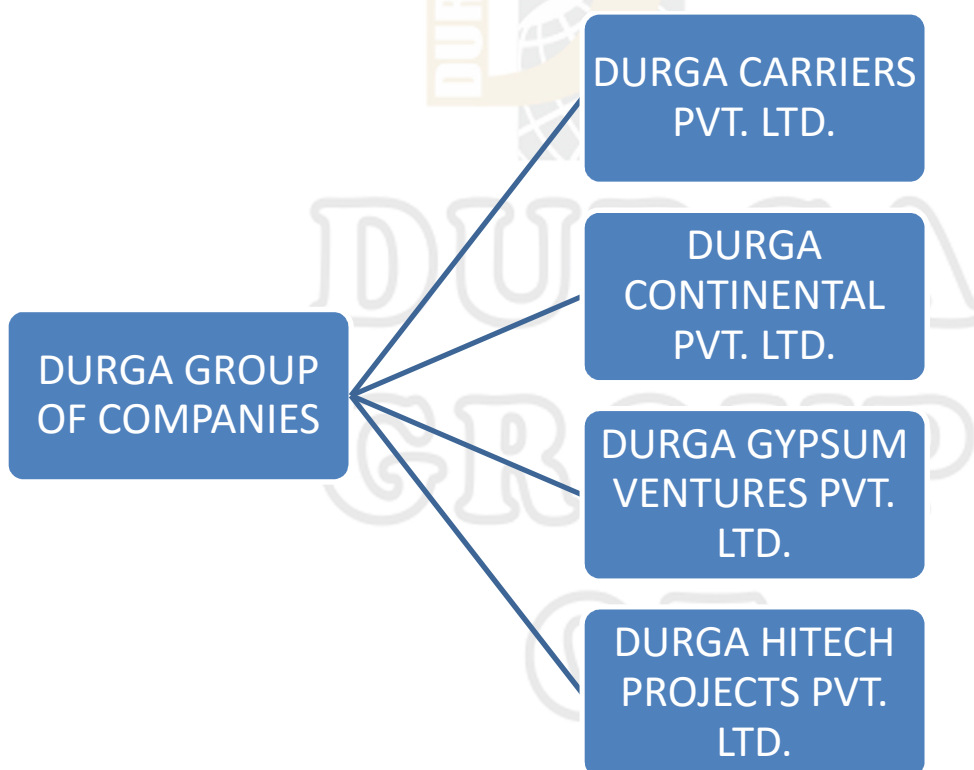
DURGA CARRIERS PVT. LTD.
PAN NO. : AAACD8178P
TIN NP. : 22512500507

DURGA HITECH PROJ. PVT. LTD.
PAN NO. : AADC05242K
TIN NO. : 22841802459

DURGA CONTINENTAL PVT. LTD.
PAN NO. : AACCD0712H
TIN NO. : 22841802459

GURGA GYPSUM VENTURES PVT. LTD.
DURGA CORPORATE PVT. LTD.
PAN NO. : AACCD7736R

3. ORGANIZATION & ITS SISTER CONCERNS:



4. Financial Status :

Our company have a total turnover of Rs :- 150 crores. and CC limit of Rs : 25 crores. and our bankers are State Bank of India, Branch – Raipur, HDFC Bank, Branch – Baloda Bazar and IDBI Bank, Branch – Baloda Bazar

COMPANIES :

DURGA CARRIERS PVT. LTD.
PAN NO. : AAACD8178P
TIN NP. : 22512500507

DURGA HITECH PROJ. PVT. LTD.
PAN NO. : AADC05242K
TIN NO. : 22841802459

DURGA CONTINENTAL PVT. LTD.
PAN NO. : AACCD0712H
TIN NO. : 22841802459

DURGA GYPSUM VENTURES PVT. LTD.
DURGA CORPORATE PVT. LTD.
PAN NO. : AACCD7736R

5. Work Done By All Companies :

- a. **DURGA CARRIERS PVT. LTD. (DCPL)** is a firm involved in the business of transportation, energy, petroleum. Since we are authorized dealer of Grasim, Ambuja, Ultratech & Lafarge for the dispatching of Cement & Clinker. We are also supplying & transporting the raw materials to the respective plants i.e. coal, gypsum & iron ore. We are approved by the Indian Bank Association (IBA) & our registration no. is RPD-1177. Durga Carriers Pvt. Ltd. has an excellent financial background & our bankers are State Bank of India, Commercial Branch, Raipur.

i. LIST OF OUR VALUED COSTOMERS:

The following are the names of our valued customers:

M/s. Lafarge India Pvt. Ltd.

M/s. Ambuja Cement Eastern Ltd.

M/s. Ultratech Cement. Ltd.

M/s. Steel Authority of India.

M/s. Food Corporation of India Ltd.

COMPANIES :

DURGA CARRIERS PVT. LTD.
PAN NO. : AAACD8178P
TIN NP. : 22512500507

DURGA HITECH PROJ. PVT. LTD.
PAN NO. : AADC05242K
TIN NO. : 22841802459

DURGA CONTINENTAL PVT. LTD.
PAN NO. : AACCD0712H
TIN NO. : 22841802459

DURGA GYPSUM VENTURES PVT. LTD.
DURGA CORPORATE PVT. LTD.
PAN NO. : AACCD7736R

ii. SISTER CONCERN FIRM:

Under the name of M/s. Durga Carrier Pvt. Ltd we have the following sister concerns

DURGA FUELS
DURGA ENERGY
LAFARGE DUMP

1. **DURGA FUELS:** We are the dealer of the Indian Oil Corporation. In Raipur we are having our Petrol Pump at Ring Road No. 2.
2. **DURGA ENERGY:** We have been appointed as a Retail Outlet dealer of Reliance Petroleum Product at Baloda Bazar.
3. **LAFARGE DUMP:** We are the authorized C&F Agents of M/s. Lafarge India Pvt. Ltd. Through Lafarge Dump, we are dispatching cements to the various dealers related with the Lafarge India Pvt. Ltd. (Bhilai and Baloda Bazar).

DURGA CONTINENTAL PVT. LTD. is the firm involved with many businesses.

Under the name of this firm we are taking part of the following business:

COMPANIES :

DURGA CARRIERS PVT. LTD.
PAN NO. : AAACD8178P
TIN NP. : 22512500507

DURGA HITECH PROJ. PVT. LTD.
PAN NO. : AADC05242K
TIN NO. : 22841802459

DURGA CONTINENTAL PVT. LTD.
PAN NO. : AACCD0712H
TIN NO. : 22841802459

GURGA GYPSUM VENTURES PVT. LTD.
DURGA CORPORATE PVT. LTD.
PAN NO. : AACCD7736R

- a. **DURGA GYPSUM VENTURES PVT. LTD. (DGVPL)** involve in the Business of various type of Gypsum, like phospho Gypsum, Chemical Gypsum, Neutralized Gypsum, Synthetic Gypsum, Imported Mineral Gypsum. Over prime motive is to serve cement industries. We are associated to all the big cement industries like – Ambuja Cement Ltd., Lafarge Cement Ltd., UltraTech Cement Ltd., Grasim, J.P. Cements.
- b. **DURGA HITECH PROJECTS PVT. LTD. (DHPPL)** is working in big sector plants for construction of Turnkey projects of greater magnitude. And also Railway project work.

5.4.1 ASSOCIATES OF DHPPL:

The following are the associates of the Durga Hitech Projects Pvt. Ltd:

- M/s VALECHA ENGINEERING LTD., Mumbai having a turnover of more than Rs 600 crores. Valecha group has authorized us for working and bidding big construction packages on their behalf.
- M/s Eskay Buildworks Pvt. Ltd, Bhilai for executing the Turnkey Electrical works of Transmission Lines ranging from voltage 400KV, 220 KV, 132 KV ,etc and also they are highly adept in working for any type of Electrical works.
- M/s Bilaspur Plastic Industries, Bilaspur who is an Experienced and reputed Track Laying Contractor of South East Central Railway, Bilaspur and has the merit & expertise of being a very successful agency for the works.
- M/s Kusum Trading Company, Gorakpur (U.P) who is very well adept in Signal and Telecommunications working in various Railways.

COMPANIES :

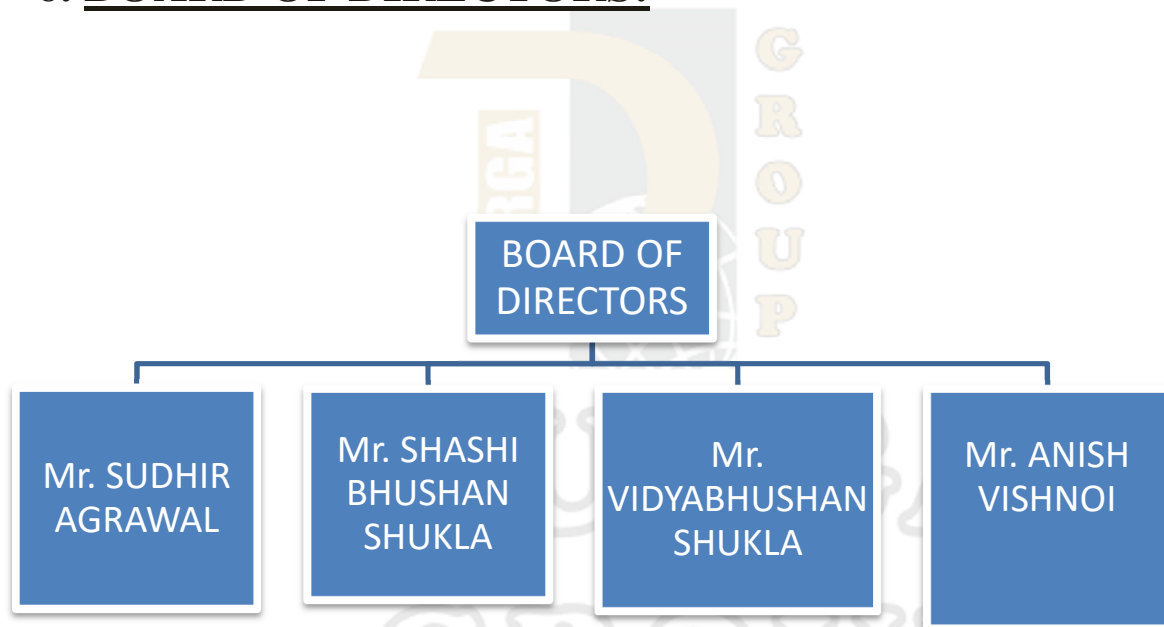
DURGA CARRIERS PVT. LTD.
PAN NO. : AAACD8178P
TIN NP. : 22512500507

DURGA HITECH PROJ. PVT. LTD.
PAN NO. : AADC05242K
TIN NO. : 22841802459

DURGA CONTINENTAL PVT. LTD.
PAN NO. : AACCD0712H
TIN NO. : 22841802459

DURGA GYPSUM VENTURES PVT. LTD.
DURGA CORPORATE PVT. LTD.
PAN NO. : AACCD7736R

6. BOARD OF DIRECTORS:



Mr. Sudhir Agrawal

Mail Id:-sudhir@dcpl.org, Mob.9977733333

Mr. Shashi Bhusahan Shukla

Mail Id:- shashi@dcpl.org, Mob. 9826911111

Mr. Vidyabhushan Shukla

Mail Id:-vidyabhushan@dcpl.org Mob.9977711111

Mr. Anish Vishnoi

Mail Id:- anish.vishnoi@dcpl.org Mob. 9926101111

COMPANIES :

DURGA CARRIERS PVT. LTD.
PAN NO. : AAACD8178P
TIN NP. : 22512500507

DURGA HITECH PROJ. PVT. LTD.
PAN NO. : AADC05242K
TIN NO. : 22841802459

DURGA CONTINENTAL PVT. LTD.
PAN NO. : AACCD0712H
TIN NO. : 22841802459

DURGA GYPSUM VENTURES PVT. LTD.
DURGA CORPORATE PVT. LTD.
PAN NO. : AACCD7736R

7. HEAD OFFICE:

STATE	PLACE	ADDRESS
Chhattisgarh	Baloda Bazar	Near Kisan Rice Mill, Lawan Road, Baloda Bazaar, Raipur (C.G)

8. BRANCH OFFICES:

S.NO	STATE	PLACE	ADDRESS
1	Chhattisgarh	Raipur	B-3 Sector-3, DevendraNager, in Front of Heritage Hospital, Raipur
2	Chhattisgarh	Bilaspur	Near Tifara Rly Crossg, DD complex, House NO.4
3	Chhattisgarh	Bhilai	C&F Agent of L.I.P.L, Opp. FCI Godown, Hathkhoj
4	Chhattisgarh	Arasmeta	Arasmeta Cement Plant, P.O. Gopalnagar
5	Chhattisgarh	Sonadih	Lafarge India Private Ltd. Sonadih, Raipur (C.G.)
6	Chhattisgarh	Ambuja	Ambuja Cement Plant, Rawan, Raipur(C.G.)
7	Chhattisgarh	Grasim	Grasim Cement Plant Rawan, Raipur(C.G)
8	Chhattisgarh	Ultratech	Ultratech Cement Ltd., Hirni, Raipur
9	Orissa	Paradeep	Gaurav Vihar, HIG-38, Madhuban, Paradeep, Distt: Jagatsinghpur, (O.R.)
10	Orissa	Cuttack	101, Mega Tech Tower, Kalyani Nagar, Madhupatna, Cuttack (O.R.)

COMPANIES :

DURGA CARRIERS PVT. LTD.
PAN NO. : AAACD8178P
TIN NP. : 22512500507

DURGA HITECH PROJ. PVT. LTD.
PAN NO. : AADC05242K
TIN NO. : 22841802459

DURGA CONTINENTAL PVT. LTD.
PAN NO. : AACCD0712H
TIN NO. : 22841802459

DURGA GYPSUM VENTURES PVT. LTD.
DURGA CORPORATE PVT. LTD.
PAN NO. : AACCD7736R

Annexure - 1

DURGA CARRIERS PVT. LTD.
LIST OF OWN & Attached FLEET

Sl. No.	Registration No.	Description	Company	MAKE	MODEL
1	CG-04ZC/0996	10 Wheelers	Tata Motors	LPT-2213	1996
2	CG-04ZC/1002	10 Wheelers	Tata Motors	LPT-2213	1996
3	CG-04ZC/1004	10 Wheelers	Tata Motors	LPT-2213	1996
4	CG-04ZC/1007	10 Wheelers	Tata Motors	LPT-2213	1996
5	CG-04ZC/1008	10 Wheelers	Tata Motors	LPT-2213	1996
6	CG-04ZC/1013	10 Wheelers	Tata Motors	LPT-2213	1996
7	CG04ZC/1014	10 Wheelers	Tata Motors	LPT-2213	1996
8	CG-04ZC/1017	10 Wheelers	Tata Motors	LPT-2213	1997
9	CG-04JA/7698	10 Wheelers	Tata Motors	TATA-2515	2000
10	CG-04JA/7696	10 Wheelers	Tata Motors	TATA-2515	2000
11	CG-04/6001	10 Wheelers	Tata Motors	TATA-2515	2001
12	CG-04/6605	10 Wheelers	Tata Motors	TATA-2515	2001
13	CG-04/6607	10 Wheelers	Tata Motors	TATA-2515	2001
14	CG-04/6608	10 Wheelers	Tata Motors	TATA-2515	2001
15	CG-04A/8375	10 Wheelers	Ashok Leyland	LY-2214	2001
16	CG-04JA/7699	10 Wheelers	Tata Motors	TATA-2515	2001
17	CG-04JB/6142	10 Wheelers	Tata Motors	TATA-2515	2001
18	CG-04JB/6144	10 Wheelers	Tata Motors	TATA-2515	2001
19	CG-04G/0244	10 Wheelers	Ashok Leyland	LEYLAND-2214	2001
20	CG-04G/0344	10 Wheelers	Ashok Leyland	LEYLAND-2214	2001
21	CG-04G/0263	10 Wheelers	Tata Motors	TATA-2515	2001
22	CG-04G/0396	10 Wheelers	Tata Motors	TATA-2515	2002
23	CG-04JA/7910	10 Wheelers	Ashok Leyland	LY-2214	2003
24	CG-04JA/7909	10 Wheelers	Ashok Leyland	LY-2214	2003
25	CG-04JA/7908	10 Wheelers	Ashok Leyland	LY-2214	2003
26	CG-04G/3412	10 Wheelers	Ashok Leyland	LY-2214	2003
27	CG-04G/3413	10 Wheelers	Ashok Leyland	LY-2214	2003
28	CG-04G/7047	10 Wheelers	Tata Motors	TATA-2515	2003
29	CG-04G/7407	10 Wheelers	Tata Motors	TATA-2515	2003

COMPANIES :

DURGA CARRIERS PVT. LTD.
PAN NO. : AAACD8178P
TIN NP. : 22512500507

DURGA HITECH PROJ. PVT. LTD.
PAN NO. : AADCDS242K
TIN NO. : 22841802459

DURGA CONTINENTAL PVT. LTD.
PAN NO. : AACCD0712H
TIN NO. : 22841802459

DURGA GYPSUM VENTURES PVT. LTD.
DURGA CORPORATE PVT. LTD.
PAN NO. : AACCD7736R



Durga

GROUP OF COMPANIES

www.dcpl.org
www.durgagroup.org
sudhir@dcpl.org
shashi@dcpl.org
anish.vishnoi@dcpl.org

30	CG-04G/3722	10 Wheelers	Ashok Leyland	LY-2214	2003
31	CG04/G3723	10 Wheelers	Ashok Leyland	LY-2214	2003
32	CG-04G/3904	10 Wheelers	Ashok Leyland	LY-2214	2003
33	CG-04G/3905	10 Wheelers	Ashok Leyland	LY-2214	2003
34	CG-04JB/6138	10 Wheelers	Tata Motors	TATA-2515EX	2003
35	CG04JC/1848	10 Wheelers	Tata Motors	TATA-2515EX	2003
36	CG04JC/1842	10 Wheelers	Tata Motors	TATA-2515EX	2003
37	CG04JC/1843	10 Wheelers	Tata Motors	TATA-2515EX	2003
38	CG04JC/1847	10 Wheelers	Tata Motors	TATA-2515EX	2003
39	CG-04G/5562	10 Wheelers	Ashok Leyland	LY-2214	2004
40	CG-04G/5563	10 Wheelers	Ashok Leyland	LY-2214	2004
41	CG-04G/5564	10 Wheelers	Ashok Leyland	LY-2214	2004
42	CG-04G/5622	10 Wheelers	Ashok Leyland	LY-2214	2004
43	CG-04G/5623	10 Wheelers	Ashok Leyland	LY-2214	2004
44	CG-04G/5624	10 Wheelers	Ashok Leyland	LY-2214	2004
45	CG-04G/5823	10 Wheelers	Ashok Leyland	LY-2214	2004
46	CG-04G/5824	10 Wheelers	Ashok Leyland	LY-2214	2004
47	CG-04G/5825	10 Wheelers	Ashok Leyland	LY-2214	2004
48	CG-04G/5827	10 Wheelers	Ashok Leyland	LY-2214	2004
49	CG-04G/6233	10 Wheelers	Ashok Leyland	LY-2214	2004
50	CG-04G/6236	10 Wheelers	Ashok Leyland	LY-2214	2004
51	CG-04G/6237	10 Wheelers	Ashok Leyland	LY-2214	2004
52	CG-04G/7444	10 Wheelers	Tata Motors	TATA-2515	2004
53	CG-04G/8444	10 Wheelers	Tata Motors	TATA-2515	2004
54	CG-04G/6523	10 Wheelers	Tata Motors	TATA-2515	2004
55	CG-04JA/7906	10 Wheelers	Tata Motors	TATA-2515	2004
56	CG-04G/8388	10 Wheelers	Tata Motors	TATA-2515	2004
57	CG04JC/1846	10 Wheelers	Tata Motors	TATA-2515EX	2004
58	CG-04JB/6143	14 Wheelers	Tata Motors	TATA-3516CEX	2005
59	CG04JC/1844	14 Wheelers	Tata Motors	TATA-3516CEX	2005
60	CG-04JB/6141	14 Wheelers	Tata Motors	TATA-3516CEX	2005
61	CG-04J/0725	10 Wheelers	Tata Motors	TATA-2515EX	2005
62	CG-04J/0726	10 Wheelers	Tata Motors	TATA-2515EX	2005
63	CG-04J/1381	10 Wheelers	Tata Motors	TATA-2515EX	2005
64	CG-04J/1463	10 Wheelers	Tata Motors	TATA-2515EX	2005
65	CG-04J/1496	10 Wheelers	Tata Motors	TATA-2515EX	2005

COMPANIES :

DURGA CARRIERS PVT. LTD.
PAN NO. : AAACD8178P
TIN NP. : 22512500507

DURGA HITECH PROJ. PVT. LTD.
PAN NO. : AADC05242K
TIN NO. : 22841802459

DURGA CONTINENTAL PVT. LTD.
PAN NO. : AACCD0712H
TIN NO. : 22841802459

DURGA GYPSUM VENTURES PVT. LTD.
DURGA CORPORATE PVT. LTD.
PAN NO. : AACCD7736R



Durga

GROUP OF COMPANIES

www.dcpl.org
 www.durgagroup.org
 sudhir@dcpl.org
 shashi@dcpl.org
 anish.vishnoi@dcpl.org

66	CG-04J/3796	10 Wheelers	Tata Motors	TATA-2515EX	2005
67	CG-04J5863	10 Wheelers	Tata Motors	TATA-2515CEX	2005
68	CG-04J/6270	10 Wheelers	Tata Motors	TATA-2515	2006
69	CG-04J/5347	10 Wheelers	Tata Motors	TATA-2518CEX	2006
70	CG-04G/6269	10 Wheelers	Tata Motors	TATA-2515CEX	2006
71	CG-04G/5986	10 Wheelers	Tata Motors	TATA-2515CEX	2006
72	CG10C/2114	18 wheelers	Tata Motors	4018 trip traller	2006
73	CG10C/2214	18 wheelers	Tata Motors	4018 trip traller	2006
74	CG10C/2014	18 wheelers	Tata Motors	4018 trip traller	2006
75	CG04JA/7611	18 wheelers	Tata Motors	4018 trip traller	2007
76	CG04JB/6140	10 Wheelers	Tata Motors	TATA-2515CEX	2007
77	CG04JC/2118	10 Wheelers	Tata Motors	TATA-2515CEX	2007
78	OR-05J/7829	18 Wheelers	Tata Motors	LPT-4018 TC	2007
79	OR-05J/7929	18 Wheelers	Tata Motors	LPT-4018 TC	2007
80	OR-05J/8029	18 Wheelers	Tata Motors	LPT-4018 TC	2007
81	OR-05J/8129	18 Wheelers	Tata Motors	LPT-4018 TC	2007
82	OR-05J/8229	18 Wheelers	Tata Motors	LPT-4018 TC	2007
83	OR-05J/8329	18 Wheelers	Tata Motors	LPT-4018 TC	2007
84	OR-05J/8429	18 Wheelers	Tata Motors	LPT-4018 TC	2007
85	OR-05J/8529	18 Wheelers	Tata Motors	LPT-4018 TC	2007
86	OR-05J/8629	18 Wheelers	Tata Motors	LPT-4018 TC	2007
87	OR-05J/7729	18 Wheelers	Tata Motors	LPT-4018 TC	2008
88	CG-04JB/9858	18 Wheelers	Tata Motors	LPT-4018 TC	2010
89	CG-04JB/9905	18 Wheelers	Tata Motors	LPT-4018 TC	2010
90	CG-04JC/0934	18 Wheelers	Tata Motors	LPT-4018 TC	2010
91	CG-04JC/0935	18 Wheelers	Tata Motors	LPT-4018 TC	2010
92	CG-04JC/0937	18 Wheelers	Tata Motors	LPT-4018 TC	2010
93	CG-04JC/1688	18 Wheelers	Tata Motors	LPT-4018 TC	2011
94	CG-04JC/1689	18 Wheelers	Tata Motors	LPT-4018 TC	2011
95	CG-04JC/1697	18 Wheelers	Tata Motors	LPT-4018 TC	2011
96	CG-04JC/1699	18 Wheelers	Tata Motors	LPT-4018 TC	2011
97	CG-04JC/6920	18 Wheelers	Tata Motors	LPT-4018 TC	2011
98	CG-04JC/9796	18 Wheelers	Tata Motors	LPT-4018 TC	2011
99	CG04JC/2550	18 Wheelers	Tata Motors	LPT-4018 TC	2011
100	CG04JC/2553	18 Wheelers	Tata Motors	LPT-4018 TC	2011

COMPANIES :

DURGA CARRIERS PVT. LTD.
 PAN NO. : AAACD8178P
 TIN NP. : 22512500507

DURGA HITECH PROJ. PVT. LTD.
 PAN NO. : AADC05242K
 TIN NO. : 22841802459

DURGA CONTINENTAL PVT. LTD.
 PAN NO. : AACCD0712H
 TIN NO. : 22841802459

GURGA GYPSUM VENTURES PVT. LTD.
 DURGA CORPORATE PVT. LTD.
 PAN NO. : AACCD7736R

101	CG04JC/2554	18 Wheelers	Tata Motors	LPT-4018 TC	2011
102	OR09T/5811	12 Wheelers	Tata Motors	LPT-3118 LPT	2011
103	OR09T/5911	12 Wheelers	Tata Motors	LPT-3118 LPT	2011
104	OR09T/6011	12 Wheelers	Tata Motors	LPT-3118 LPT	2011
105	OR09T/6111	12 Wheelers	Tata Motors	LPT-3118 LPT	2011
106	CG04JC/6293	12 Wheelers	Tata Motors	LPT-3118 LPT	2012
107	CG04JC/6296	12 Wheelers	Tata Motors	LPT-3118 LPT	2012
108	CG04JC/8450	12 Wheelers	Tata Motors	LPT-3118 LPT	2012
109	CG-04JC/8452	12 Wheelers	Tata Motors	LPT-3118 LPT	2012
110	CG04JC/8096	18 Wheelers	Tata Motors	LPT-4018 TC	2012
111	CG04JC/8097	18 Wheelers	Tata Motors	LPT-4018 TC	2012
112	CG04JC/8398	18 Wheelers	Tata Motors	LPT-4018 TC	2012
113	CG22C/0363	18 Wheelers	Tata Motors	Trip Traller	2014
114	CG22C/0364	18 Wheelers	Tata Motors	Trip Traller	2014
115	CG22C/0421	18 Wheelers	Tata Motors	Trip Traller	2014
116	CG22C/0422	18 Wheelers	Tata Motors	Trip Traller	2014
117	CG22C/0423	18 Wheelers	Tata Motors	Trip Traller	2014
118	CG22C/0424	18 Wheelers	Tata Motors	Trip Traller	2014
119	CG22C/0425	18 Wheelers	Tata Motors	LPT-4018 TC	2014
120	CG22C/0429	12 Wheelers	Tata Motors	LPT-3118 LPT	2014
121	CG22C/0430	12 Wheelers	Tata Motors	LPT-3118 LPT	2014
122	CG22C/0431	12 Wheelers	Tata Motors	LPT-3118 LPT	2014
123	CG22C/0432	12 Wheelers	Tata Motors	LPT-3118 LPT	2014

COMPANIES

COMPANIES :

DURGA CARRIERS PVT. LTD.
PAN NO. : AAACD8178P
TIN NP. : 22512500507

DURGA HITECH PROJ. PVT. LTD.
PAN NO. : AADC05242K
TIN NO. : 22841802459

DURGA CONTINENTAL PVT. LTD.
PAN NO. : AACCD0712H
TIN NO. : 22841802459

DURGA GYPSUM VENTURES PVT. LTD.
DURGA CORPORATE PVT. LTD.
PAN NO. : AACCD7736R

List of Machinery

Sl.No.	Type of Equipment	Qty	Make	Year of Purchase	Remarks
A) Civil Construction Work					
1	Self Loading Tranjit Mixture Machine	1 Nos	Macon	2010	
2	Concrete Pump	1 Nos	Schwing Setter	2010	
3	Mixture Machine (RM 800)	1 Nos	Schwing Setter	2010	
4	Bar Cutting Machine	2 Nos	Rajat	2010	
5	Bar Binding Machine	2 Nos	Rajat	2010	
6	Beching Plant	1 Nos	Schwing Setter	2012	
7	Mixtire Machine	4 nos	Singh	2011	
8	Electrical Vibrator	8 Nos	Honda	2012	
9	Petrol Vibrator	11 Nos	Honda	2012	
10	Niddle (60/40/25)	50 Nos	Singh	2011	
11	Vecum Dewatering Pump	3 Nos	JVC	2012	
12	TrimixFlotter	4 Nos	JVC	2011	
13	Tranjit Mixture Machine	2 Nos	Schwing Setter/ AMW	2010	
14	Diesel Refuling Machine	1 Nos	Mahindra	2011	
15	Electronics Waybridge	1 Nos	AIWA	2011	
16	Genrator Set (80 KVA)	1 Nos	Kirlosker	2011	
17	Genrator Set (25 KVA)	1 Nos	Kirlosker	2011	
18	Genrator Set (10 KVA)	1 Nos	Kirlosker	2011	
19	Hydra (12 Ton)	1 Nos	Escort	2011	
20	Total Station Machine	1 Nos	Sokia	2011	
21	Watar Pump/Mud Pump	4 Nos	Kirlosker	2011	
22	Lezor Pipe	5000 Nos	Tata	2012	
23	Props	2000 Nos	Local	2011	
24	Clamp	50000 Nos	Singh	2012	
25	Shuttering Plate	3000 Sqm	Local	2011	
26	Tata DI-207	1 Nos	Tata	2008	
27	JCB	1 Nos	JCB	2009	
28	JCB	1 Nos	JCB	2011	

COMPANIES :

DURGA CARRIERS PVT. LTD.
PAN NO. : AAACD8178P
TIN NP. : 22512500507

DURGA HITECH PROJ. PVT. LTD.
PAN NO. : AADC05242K
TIN NO. : 22841802459

DURGA CONTINENTAL PVT. LTD.
PAN NO. : AACCD0712H
TIN NO. : 22841802459

GURGA GYPSUM VENTURES PVT. LTD.
DURGA CORPORATE PVT. LTD.
PAN NO. : AACCD7736R

B) Mining Work					
1	Pocling Including Rock Braker (JCB -210)	1 Nos	Tata Hitachi	2011	
2	Hywa (Ashok Leyland)	10 Nos	Ashok Leyland	2007	
3	BackhoLodder	4 Nos	JCB	2011	
4	Dozer	2 Nos	CatterPiller	2011	
5	Watar Tanker	4 Nos	Mahindra	2012	
6	compressor Machine	2 Nos	Mahindra	2011	
7	Tractor Grader	1 Nos	Arjun Mahindra	2010	
8	Thoudo Light	2 Nos	Sokia	2012	
9	Auto Level	5 Nos	Sokia	2011	

Page - 02

Sl.No.	Type of Equipment	Qty	Make	Year of Purchase	Remarks
C) Road Construction Work					
1	Drum Mix Plant	1 Nos	Appolo	2011	
2	Vibro Roller (Double Drum)	1 Nos	L & T	2011	
3	Vibro Roller (Single Drum)	1 Nos	L & T	2010	
4	Pavar	1 Nos	Appolo	2011	
5	Hywa (Ashok Leyland)	4 Nos	Ashok Leyland	2008	
6	Static Roller	1 Nos	Local	2010	
7	Tata DI-207	1 Nos	Tata	2009	
8	JCB	1 Nos	JCB	2011	
9	Comprassor Machine	1 Nos	Mahindra	2010	

COMPANIES :

DURGA CARRIERS PVT. LTD.
PAN NO. : AAACD8178P
TIN NP. : 22512500507

DURGA HITECH PROJ. PVT. LTD.
PAN NO. : AADC05242K
TIN NO. : 22841802459

DURGA CONTINENTAL PVT. LTD.
PAN NO. : AACCD0712H
TIN NO. : 22841802459

GURGA GYPSUM VENTURES PVT. LTD.
DURGA CORPORATE PVT. LTD.
PAN NO. : AACCD7736R

D) Electrical Equipment					
1	Welding Machine	6 Nos			2009
2	Three Phase Drill Machine	1 Nos			2008
3	Single Phase Drill Machine	6 Nos			2009
4	Gas Cutter Sets	2 Nos			2010
5	Mager 0 - 5000v	3 Nos			2011
6	Mager 0 - 500v	1 Nos			2011
7	Toung Tester 0-1000A-AC & DC	3 Nos			2010
8	Chain Block - 2 Tons	2 Nos			2011
9	Combination Plyer's	14 Nos			2009
10	Mini Hexa Frame	20 Nos			2010
11	Big Hexa Frame	10 Nos			2011
12	Ring Spanner Set 8-9 to 36-42	4 Sets			2011
13	Ring Spanner Set 6-7 to 36-42	5 Sets			2011
14	Pipe Wrinch	2 Nos			2011
15	Table Vice	2 Nos			2009
16	Hand Grinder	2 Nos			2011
17	Cable Cutter	2 Nos			2011
18	H.T.Cable End Termination Tool Kit	2 Nos			2011
19	Multimeter's	8 Nos			2011
20	Hamer's 200g - 2000g	9 Nos			2011
21	Bearing Puller	2 Nos			2011
22	Stand For Cable laying	14 Nos			2011
23	Earth Tester	2 Nos			2011
24	Matirial Transporting Use- DI Pickup Van	3 Nos			2009
25	Holsha Cutter Set 16mm to 100mm	5 Sets			2011
26	Screw Driver All type	10 Sets			2011
27	Nose Pliyer's	8 Nos			2011
28	CirclipPliyer	4 Nos			2009
29	Chiseals	10 Nos			2009
30	Measuring Tap - 50mt	2 Nos			2009

COMPANIES :

DURGA CARRIERS PVT. LTD.
PAN NO. : AAACD8178P
TIN NP. : 22512500507

DURGA HITECH PROJ. PVT. LTD.
PAN NO. : AADC05242K
TIN NO. : 22841802459

DURGA CONTINENTAL PVT. LTD.
PAN NO. : AACCD0712H
TIN NO. : 22841802459

GURGA GYPSUM VENTURES PVT. LTD.
DURGA CORPORATE PVT. LTD.
PAN NO. : AACCD7736R

E) Lab Testing Equipment

1	Diimod Cutter Machine	1 Nos	Boch	2011	
2	AIV Testing Machine	1 Nos	R.H.Agency	2011	
3	CBR Testing Machine	1 Nos	R.H.Agency	2010	
4	Cube Testing Machine	1 Nos	R.H.Agency	2010	
5	Core Cutter	4 Nos	R.H.Agency	2009	
6	Field Compaction Test Machine	8 Nos	R.H.Agency	2010	
7	BT % Test Machine	1 Nos	R.H.Agency	2009	
8	Sand Screening	1 Nos	R.H.Agency	2010	
9	Slum Cone	1 Nos	R.H.Agency	2009	
10	Oven	1 Nos	R.H.Agency	2010	
11	Weight Machine	3 Nos	R.H.Agency	2010	

OF
COMPANIES

COMPANIES :

DURGA CARRIERS PVT. LTD.
PAN NO. : AAACD8178P
TIN NP. : 22512500507

DURGA HITECH PROJ. PVT. LTD.
PAN NO. : AADC05242K
TIN NO. : 22841802459

DURGA CONTINENTAL PVT. LTD.
PAN NO. : AACCD0712H
TIN NO. : 22841802459

GURGA GYPSUM VENTURES PVT. LTD.
DURGA CORPORATE PVT. LTD.
PAN NO. : AACCD7736R

M/s DurgaHitech Projects Pvt. Ltd. , Baloda Bazar

Details of Staff (CIVIL WORK)

Sl.No.	Name of Staff	Position	Education	Expriance
1	Chandan Karmaker	Project Manager	M. Com.	15 Year
2	Sudhir Kumar	Civil Engineer	Diploma in Civil Engineering	12 Year
3	Subhash Singh	Civil Engineer	Diploma in Civil Engineering	17 Year
4	SeemantVerma	Purchase Manager	M. Com.	9 Year
5	D. Markandey	Survayor	ITI	10 Year
6	D. Partho	Survayor	ITI	8 Year
7	Ranjan Sharma	Site Incharge	BSC	14 Year
8	RajuManhare	Survayor	ITI	4 Year
9	GhanshyamVerma	Lab Tech.	BSC	9 Year
10	M. Samanto	Lab Tech.	BSC	11 Year
11	Mahendra Sharma	Supervisor	M.com	7 Year
12	Arun Sharma	Supervisor	BSC	9 Year
13	Dhiraj Singh	Supervisor	BA	6 Year
14	Gopal Singh	Supervisor	M.com	4 Year
15	Neeraj Singh	Supervisor	M.com	3 Year
16	BhuneswarMarkandey	Supervisor	BSC	9 Year
17	GhanshyamSahu	Supervisor	BA	8 Year

COMPANIES

COMPANIES :

DURGA CARRIERS PVT. LTD.
PAN NO. : AAACD8178P
TIN NP. : 22512500507

DURGA HITECH PROJ. PVT. LTD.
PAN NO. : AADC05242K
TIN NO. : 22841802459

DURGA CONTINENTAL PVT. LTD.
PAN NO. : AACCD0712H
TIN NO. : 22841802459

GURGA GYPSUM VENTURES PVT. LTD.
DURGA CORPORATE PVT. LTD.
PAN NO. : AACCD7736R

M/s Durga Group Of Companies, Baloda Bazar

Details of Staff (Accounts Department)

Sl.No.	Name of Staff	Position	Education	Expriance
1	RakeshPandey	Sr. Accountant	M.Com	12 Years
2	Devesh Kumar Sao	Accounts	B.com	6 Years

M/s Durga Carriers Pvt. Ltd., Baloda Bazar

Details of Staff (Cash Department)

Sl.No.	Name of Staff	Position	Education	Expriance
1	Heera Sahu	Head Cashier	M.Com	14 Years
2	Jagdish Kanojee	Asst. Cashier	M.A. (Eco.)	7 Years

M/s Durga Carriers Pvt. Ltd., Baloda Bazar

Details of Staff (Billing Department)

Sl.No.	Name of Staff	Position	Education	Expriance
1	UttamVerma	Billing Manager	M.A.	7 Years
2	Om PrakashDevnani	Billing Manager	B.A., B.Sc.	6 Years
3	MahendraYadav	Assistant Billing	B.Com	6 Years
4	VedPrakashSen	Assistant Billing	12th, DCA	4 Years
5	Taman Chandrakar	Assistant Billing	12th	6 Years
6	Rakesh Kumar Sahu	Assistant Billing	DCA	6 Years
7	DheerajDevangan	Assistant Billing	M.Com	6 Years

COMPANIES :

DURGA CARRIERS PVT. LTD.
PAN NO. : AAACD8178P
TIN NP. : 22512500507

DURGA HITECH PROJ. PVT. LTD.
PAN NO. : AADC05242K
TIN NO. : 22841802459

DURGA CONTINENTAL PVT. LTD.
PAN NO. : AACCD0712H
TIN NO. : 22841802459

GURGA GYPSUM VENTURES PVT. LTD.
DURGA CORPORATE PVT. LTD.
PAN NO. : AACCD7736R

M/s Durga Carriers Pvt. Ltd., Baloda Bazar

Details of Staff (Vehicle Department)

Sl.No.	Name of Staff	Position	Education	Expriance
1	Manoj Singh	Head Logistic	M.A.	12 Years
2	Ashok Singh	Supervisor	M.sc. (Geology)	10 Years
3	Mohan Sonwani	Assistant	B.A.	8 Years
4	VinodChandrakar	Assistant	B.A.	8 Years
5	JagguVaishnaw	Assistant	B.Com	8 Years
6	Vipul Patel	Assistant	B.A.	6 Years
7	EklavyaKanojee	Assistant	12th	7 Years

M/s Durga Carriers Pvt. Ltd., Baloda Bazar

Details of Staff (Vehicle Repairing And Truck Division)

Sl.No.	Name of Staff	Position	Education	Expriance
1	S.N. Momaya	Manager(Vehicle Repairing)	M.A.	13 Years
2	Ram Gopal Verma	Assistant Vehicle	12th	9 Years
3	Indrakumar Tandan	Driver	I.T.I.	7 years
4	Manoj Tandan	Driver	12th	5 Years
5	Umendra Sahu	V. maintenance	I.T.I.	7 years
6	Ram Shankar Kanojee	Greaser	12th	5 Years
7	Pankaj kumar	Greaser	12th	5 Years
8	Lalit Soni	Manager(Truck Div)	M.Com, M.A.	20 Years
9	Bishambhar Yadav	Assistant	M.A., PGDCA	7 years
10	Arpan Goverdhan	A.G.M	B.Com	5 Years
11	NilkanthVerma	Assistant	M.A., PGDCA	10 years

M/s Durga Carriers Pvt. Ltd., Baloda Bazar

Details of Staff (Logistic And Networking Department)

Sl.No.	Name of Staff	Position	Education	Expriance
1	Raju Parwani	Manager Logistic	M.A.	15 Years
2	Sandeep Saraf	Assistant	M.A.	15 Years
3	Ravindra Jain	Assistant	B.A.	7 Years
4	Manjeet Kunwar Singh	Networking Incharge	PGDCA	6 Years

COMPANIES :

DURGA CARRIERS PVT. LTD.
PAN NO. : AAACD8178P
TIN NP. : 22512500507

DURGA HITECH PROJ. PVT. LTD.
PAN NO. : AADC05242K
TIN NO. : 22841802459

DURGA CONTINENTAL PVT. LTD.
PAN NO. : AACCD0712H
TIN NO. : 22841802459

GURGA GYPSUM VENTURES PVT. LTD.
DURGA CORPORATE PVT. LTD.
PAN NO. : AACCD7736R

M/s Durga Carriers Pvt. Ltd., Baloda Bazar

Details of Staff (Dump)

Sl.No.	Name of Staff	Position	Education	Expriance
1	Abhisekh Wany	Computer Operator	PGDCA	5 years
2	Krishnakant Tiwari	Supervisor	B.A.	6 Years
3	Kamlesh Chandrakar	Supervisor	12th	7 Years
4	Sita Ram Vishwakarma	Supervisor	B.A.	8 Years
5	Chuda Mani Yadu	Computer Operator	DCA	8 Years

M/s Durga Carriers Pvt. Ltd., Baloda Bazar

Details of Staff (All Site)

Sl.No.	Name of Staff	Position	Expriance	Site Location
1	Ankit Shriwastawa	Computer Operator	8 Years	Ambuja
2	Duleshwar Sahu	Computer Operator	7 Years	Ambuja
3	Durgesh Verma	Logistic	8 Years	Ambuja
4	Raju Chandrakar	Logistic	10 Years	Ambuja
5	Net Ram Verma	Logistic	10 Years	Ambuja
6	Manish Chandrakar	Logistic	9 Years	Ambuja
7	Ashok Katoch	Logistic	9 Years	Hirmi
8	Dakeshwar Sahu	Computer Operator (Night/Day)	12 years	Hirmi
9	Kisan Sahu	Logistic	10 Years	Hirmi
10	Krishna Jaiswal	Logistic	10 Years	Hirmi
11	Tika Ram Sahu	Computer Operator (Night/Day)	8 years	Hirmi
12	Pramod Pandey	Cashier	15 Years	Sonadih
13	Bhagwat Bose	Computer Operator(Day/Night)	14 Years	Sonadih
14	Devendra Pratap Singh	SaftyIncharge	5 Years	Sonadih
15	Ganesh Ram	logistic	16 Years	Sonadih
16	Pankaj Naik	SaftyIncharge	10 Years	Sonadih
17	Tijendra Jagat	Computer Operator	8 Years	Sonadih

COMPANIES :

DURGA CARRIERS PVT. LTD.
PAN NO. : AAACD8178P
TIN NP. : 22512500507

DURGA HITECH PROJ. PVT. LTD.
PAN NO. : AADC05242K
TIN NO. : 22841802459

DURGA CONTINENTAL PVT. LTD.
PAN NO. : AACCD0712H
TIN NO. : 22841802459

DURGA GYPSUM VENTURES PVT. LTD.
DURGA CORPORATE PVT. LTD.
PAN NO. : AACCD7736R

M/s Durga Carriers Pvt. Ltd., Baloda Bazar

Details of Staff (Raipur)

Sl.No.	Name of Staff	Position	Expriance
1	K. Raju	Accountant	15 Years
2	SUDAMA VERMA	Accountant	14 Years
3	ASHISH JOSHI	Field Work	14 Years
4	CHANCHAL BANERJEE	Assistant	10 Years
5	MASOOM CHAUHAN	Assistant	10 Years
6	RAMESH RAI	Assistant	8 Years
7	L.P. GOSWAMI	Supervisor	9 Years
9	AMAR SINGH DHRUW	Supervisor	9 Years
10	YOGENDRA KUMAR DEWANGAN	Supervisor	7 Years
11	PANKAJ SHIKHA	Comp. operator	5 Years

M/s Durga Gypsum Ventures Pvt. Ltd., Baloda Bazar

Details of Staff (Gypsum Work)

Sl.No.	Name of Staff	Position	Qualification	Expriance
1	Pankaj Tiwari	Sr. Accountant	M.B.A	9 Years
2	Dinbandhu Verma	Asst. Accountant	B.Com	12 Years
3	Shailendra Vishnoi	Supervisor	I.T.I (Auto PLC)	5 Years
4	Santosh Goyal	Computer Operator	B.A.	5 Years

M/s Durga Continental Pvt. Ltd., Baloda Bazar

Details of Staff (Bhilai Dump)

Sl.No.	Name of Staff	Position	Education	Expriance
1	Mahendra Sahu	Incharge	B.Com	16 Years
2	Pankaj Dwivedi	Assistant	B.A.	12 Years
3	Hemraj Yadav	Assistant	D.C.A.	8 Years
4	Anant Kumar	Computer Operator	B.C.A.	6 Years
5	Shabbir Ahmed	Logistic	M.Com.	14 Years

COMPANIES :

DURGA CARRIERS PVT. LTD.
PAN NO. : AAACD8178P
TIN NP. : 22512500507

DURGA HITECH PROJ. PVT. LTD.
PAN NO. : AADC05242K
TIN NO. : 22841802459

DURGA CONTINENTAL PVT. LTD.
PAN NO. : AACCD0712H
TIN NO. : 22841802459

GURGA GYPSUM VENTURES PVT. LTD.
DURGA CORPORATE PVT. LTD.
PAN NO. : AACCD7736R

Annexure - 4

M/s Durga Group of Industries, Baloda Bazar

List of our Client

Sl.No.	Name of Concern	Address
1	Lafarge India Private Limited,	Sonadih Cement Plant, Sonadih
		Arasmenta Cement Plant, Gopal Nagar
		Jojobera Cement Plant, Jamsedpur
		Mejia Cement Plant, Mejia
		Chittor Cement Plant, Chittorgarh
		Bhawani Cement Works, Haryana
2	Ambuja Cement Limited,	Ambuja Cement Plant (Unit Rawan, Bhatapara)
3	Ultratech Cement Limited	Hirmi Cement Works, Hirmi
		Rawan Cement Works, Rawan
4	ACC Limited	Mumbai

COMPANIES :

DURGA CARRIERS PVT. LTD.
PAN NO. : AAACD8178P
TIN NP. : 22512500507

DURGA HITECH PROJ. PVT. LTD.
PAN NO. : AADC05242K
TIN NO. : 22841802459

DURGA CONTINENTAL PVT. LTD.
PAN NO. : AACCD0712H
TIN NO. : 22841802459

GURGA GYPSUM VENTURES PVT. LTD.
DURGA CORPORATE PVT. LTD.
PAN NO. : AACCD7736R

5	Shree Cement Ltd.	Vill-Khapradih, Teh-Simga, Batapara, Baloda Bazar (C.G.)
6	Emami Cement Ltd.	Vill- Risda, Suhela Road, Baloda Bazar (C.G.)
7	J.K.Lakshmi Cement Ltd.	Vill-Malpuri, Khurd Khasodih, P.O.-Ahiwara, Teh-Dhamdha, Durg (C.G.)
8	Bhilai Jaypee Cement Ltd.	Slag Road (Opp-Sector-4 NMOH) Bhilai Steel Plant Premis Bhilai, Durga (C.G)
9	Public Work Department	Baloda Bazar
10	Jindal Steel & Power Ltd.,	Kharsiya Road Raigarh
11	Larsen & Toubro Ltd.,	PB No. 979, Mount-Poonamallee Road, Manapakkam Chennai Pin-600089
12	Valecha Engineering Ltd.,	Mumbai
13	IFFCO Ltd.,	Vill- Musadia Dist. Jagatsinghpur, Paradeep (Orrissa)
14	Paradeep Phosphate Limited	Paradeep

COMPANIES :

DURGA CARRIERS PVT. LTD.
PAN NO. : AAACD8178P
TIN NP. : 22512500507

DURGA HITECH PROJ. PVT. LTD.
PAN NO. : AADC05242K
TIN NO. : 22841802459

DURGA CONTINENTAL PVT. LTD.
PAN NO. : AACCD0712H
TIN NO. : 22841802459

DURGA GYPSUM VENTURES PVT. LTD.
DURGA CORPORATE PVT. LTD.
PAN NO. : AACCD7736R