

TO WHOMSOEVER IT MAY CONCERN

Introduction & Credentials of the Company.

We would like to introduce ourselves as a leading business house for cement industries in various works, with adequate manpower, machinery & infrastructure, with various group of company, known as **Durga Group of Companies** details are given below:-

1. **Durga Carriers Pvt. Ltd.,:-** We are working in this company basically cement & raw material transportation, rake handling for cement (Packed) & loose material in various siding, with various industries.
2. **Durga Continental Pvt. Ltd., :-** We are working in this company basically, civil construction and trading business.
3. **Durga Hitech Projects Pvt Ltd.:-** We are working in this company basically Railway construction like:- P way, OHE, S&T with L&T Ecc division. We also worked in HT line shifting Like- 33 kv & 11 Kv lines.
4. **Durga Gypsum Ventures Pvt. Ltd.,:-** We are working in this company Gypsum business, Like:- Chemical, Phospho, Mineral, Neutralised & Synthetic Gypsum etc., formally this company known as 'Durga Corporate Consultancy Pvt. Ltd., In this company we did Internal shifting & handling of Coal, Clinker, Lime Stone etc.

Our Company based at **Baloda Bazar, Chhattisgarh** we are well aware about the political and geographical condition of the state. We have all statutory registrations with appropriate government agency, like:- PF, TIN, Excise & vat Etc.

We will be happy to receive your offer, order, quotation related to our scope of work. We are very much keen to be associated with your esteemed organisation.

Thanking you,

Regards

For, Durga Group of Companies.

COMPANIES :

DURGA CARRIERS PVT. LTD.
PAN NO. : AAACD8178P
TIN NP. : 22512500507

DURGA HITECH PROJ. PVT. LTD.
PAN NO. : AADC05242K
TIN NO. : 22841802459

DURGA CONTINENTAL PVT. LTD.
PAN NO. : AACCD0712H
TIN NO. : 22841802459

GURGA GYPSUM VENTURES PVT. LTD.
DURGA CORPORATE PVT. LTD.
PAN NO. : AACCD7736R

WORK HANDLE BY DURGA GROUP OF COMPANIES:

- Transportation Work (Cement/Gypsum/Iron Ore/Clinker/Coal and other raw materials).
- Civil Work (Road and Buildings).
- Railway Projects – Earth work, P-way, Telecom & OHE on turnkey basis.
- Raw material trading – Phospho/Chemical Gypsum/ Iron fines/ Important Coal & Gypsum/Bauxite/Sand.
- Trading Work- Gypsum/Phospho Gypsum/Iron Ore/Coal Trading.
- Internal Raw Material Handling.
- Rake Handling Work- Loading/ Unloading and Transporting.
- Petrol Pumps.
- Ware Housing.
- Real Estate Business.
- Heavy Electrical Power Line transmission.
- Government *Liasoning* and facilitating for land etc.

COMPANIES :

DURGA CARRIERS PVT. LTD.
PAN NO. : AAACD8178P
TIN NP. : 22512500507

DURGA HITECH PROJ. PVT. LTD.
PAN NO. : AADC05242K
TIN NO. : 22841802459

DURGA CONTINENTAL PVT. LTD.
PAN NO. : AACCD0712H
TIN NO. : 22841802459

GURGA GYPSUM VENTURES PVT. LTD.
DURGA CORPORATE PVT. LTD.
PAN NO. : AACCD7736R

TABLE OF CONTENTS

S.NO	TITLE	PG NO.
1.	Company Policy	04
2.	Code of Ethics & Statement of Conduct	04
3.	Organization & Its Sister Concerns:	05
4.	Financial Status	05
5.	Work Done By All Companies	06-08
5.1	Durga Carriers Pvt. Ltd.	06-08
5.2	Durga Continental Pvt. Ltd.	06-08
5.3	Durga Constructions	06-08
5.4	Durga Gypsum Ventures Pvt. Ltd.	06-08
5.5	Durga Hitech Projects Pvt. Ltd.	06-08
6.	Board of Directors	09
7	Head Office	10
8	Branch Offices	11
9	Fleet List of Owned Company	Annex (1)
10	List Of Equipments	Annex (2)
11	Staff Details	Annex (3)
12	Client Details	Annex (4)
13	Contract & Work Executed	Annex (5)

COMPANIES :

DURGA CARRIERS PVT. LTD.
PAN NO. : AAACD8178P
TIN NP. : 22512500507

DURGA HITECH PROJ. PVT. LTD.
PAN NO. : AADC05242K
TIN NO. : 22841802459

DURGA CONTINENTAL PVT. LTD.
PAN NO. : AACCD0712H
TIN NO. : 22841802459

GURGA GYPSUM VENTURES PVT. LTD.
DURGA CORPORATE PVT. LTD.
PAN NO. : AACCD7736R

1. COMPANY POLICY:

DURGA GROUP OF COMPANIES considers quality to be the key success factor. Our Service is focused on our customers, their needs & their satisfaction. Continuous efforts shall be made for improvement in service for meeting customer's expectation at any point of time.

Regularly reviewing our performance & identifying the potential area of development through team work shall be our main quality objective.

Team Work, Reliability, Consistency, Commitment, Safety, Environmental upkeep, Training of our employees & building social images will be guiding valuing in all facets of our functioning.

2. CODE OF ETHICS & STATEMENT OF CONDUCT:

Durga Group Of Companies believes in the highest ethical standards. We demonstrate the beliefs of our company through our commitment.

To Our Employees, We are committed to just management & equality for all providing a safe & healthy workplace & respecting dignity due to all human beings.

To Our Customer, We are committed to provide reliable services at a fair price that are delivered on time & within budget.

To Our Community, In which we live, we are committed to the responsible neighbors reflecting all aspects of good citizenship.

To Our Suppliers, We are committed towards fair competition & the sense of responsibility required of a good customer.

COMPANIES :

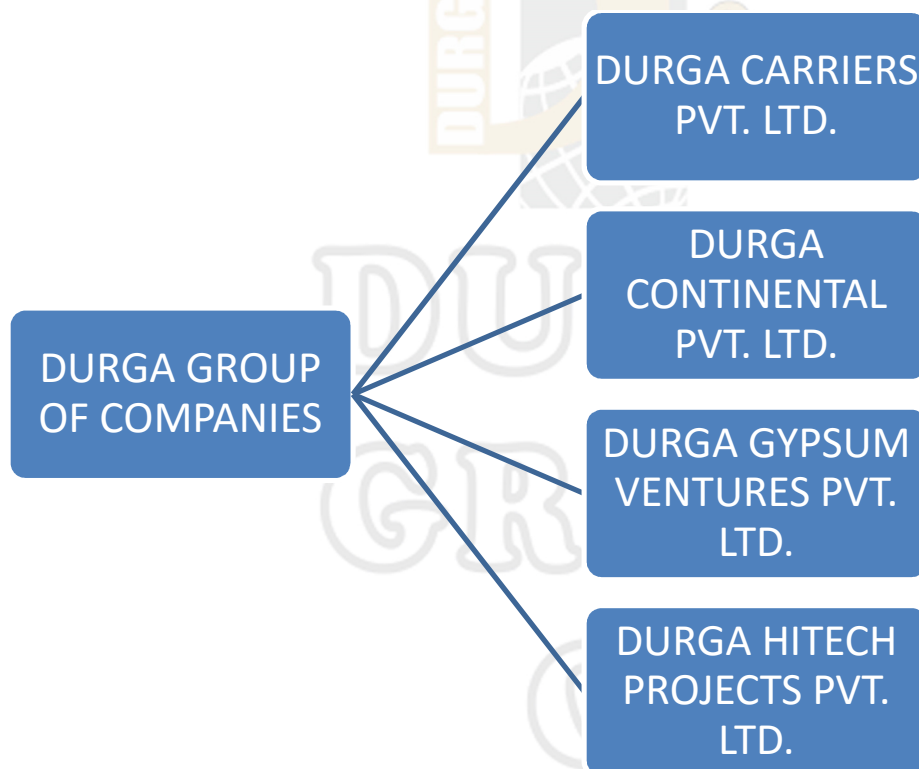
DURGA CARRIERS PVT. LTD.
PAN NO. : AAACD8178P
TIN NP. : 22512500507

DURGA HITECH PROJ. PVT. LTD.
PAN NO. : AADCDS242K
TIN NO. : 22841802459

DURGA CONTINENTAL PVT. LTD.
PAN NO. : AACCD0712H
TIN NO. : 22841802459

GURGA GYPSUM VENTURES PVT. LTD.
DURGA CORPORATE PVT. LTD.
PAN NO. : AACCD7736R

3. ORGANIZATION & ITS SISTER CONCERNS:



4. Financial Status :

Our company have a total turnover of Rs :- 150 crores. and CC limit of Rs : 25 crores. and our bankers are State Bank of India, Branch – Raipur, HDFC Bank, Branch – Baloda Bazar and IDBI Bank, Branch – Baloda Bazar

COMPANIES :

DURGA CARRIERS PVT. LTD.
PAN NO. : AAACD8178P
TIN NP. : 22512500507

DURGA HITECH PROJ. PVT. LTD.
PAN NO. : AADCD5242K
TIN NO. : 22841802459

DURGA CONTINENTAL PVT. LTD.
PAN NO. : AACCD0712H
TIN NO. : 22841802459

DURGA GYPSUM VENTURES PVT. LTD.
DURGA CORPORATE PVT. LTD.
PAN NO. : AACCD7736R

5. Work Done By All Companies :

- a. **DURGA CARRIERS PVT. LTD. (DCPL)** is a firm involved in the business of transportation, energy, petroleum. Since we are authorized dealer of Grasim, Ambuja, Ultratech & Lafarge for the dispatching of Cement & Clinker. We are also supplying & transporting the raw materials to the respective plants i.e. coal, gypsum & iron ore. We are approved by the Indian Bank Association (IBA) & our registration no. is RPD-1177. Durga Carriers Pvt. Ltd. has an excellent financial background & our bankers are State Bank of India, Commercial Branch, Raipur.

i. LIST OF OUR VALUED COSTOMERS:

The following are the names of our valued customers:

M/s. Lafarge India Pvt. Ltd.

M/s. Ambuja Cement Eastern Ltd.

M/s. Ultratech Cement. Ltd.

M/s. Steel Authority of India.

M/s. Food Corporation of India Ltd.

COMPANIES :

DURGA CARRIERS PVT. LTD.
PAN NO. : AAACD8178P
TIN NP. : 22512500507

DURGA HITECH PROJ. PVT. LTD.
PAN NO. : AADC05242K
TIN NO. : 22841802459

DURGA CONTINENTAL PVT. LTD.
PAN NO. : AACCD0712H
TIN NO. : 22841802459

DURGA GYPSUM VENTURES PVT. LTD.
DURGA CORPORATE PVT. LTD.
PAN NO. : AACCD7736R

ii. SISTER CONCERN FIRM:

Under the name of M/s. Durga Carrier Pvt. Ltd we have the following sister concerns

DURGA FUELS
DURGA ENERGY
LAFARGE DUMP

1. **DURGA FUELS:** We are the dealer of the Indian Oil Corporation. In Raipur we are having our Petrol Pump at Ring Road No. 2.
2. **DURGA ENERGY:** We have been appointed as a Retail Outlet dealer of Reliance Petroleum Product at Baloda Bazar.
3. **LAFARGE DUMP:** We are the authorized C&F Agents of M/s. Lafarge India Pvt. Ltd. Through Lafarge Dump, we are dispatching cements to the various dealers related with the Lafarge India Pvt. Ltd. (Bhilai and Baloda Bazar).

DURGA CONTINENTAL PVT. LTD. is the firm involved with many businesses.

Under the name of this firm we are taking part of the following business:

COMPANIES :

DURGA CARRIERS PVT. LTD.
PAN NO. : AAACD8178P
TIN NP. : 22512500507

DURGA HITECH PROJ. PVT. LTD.
PAN NO. : AADC05242K
TIN NO. : 22841802459

DURGA CONTINENTAL PVT. LTD.
PAN NO. : AACCD0712H
TIN NO. : 22841802459

GURGA GYPSUM VENTURES PVT. LTD.
DURGA CORPORATE PVT. LTD.
PAN NO. : AACCD7736R

- a. **DURGA GYPSUM VENTURES PVT. LTD. (DGVPL)** involve in the Business of various type of Gypsum, like phospho Gypsum, Chemical Gypsum, Neutralized Gypsum, Synthetic Gypsum, Imported Mineral Gypsum. Over prime motive is to serve cement industries. We are associated to all the big cement industries like – Ambuja Cement Ltd., Lafarge Cement Ltd., UltraTech Cement Ltd., Grasim, J.P. Cements.
- b. **DURGA HITECH PROJECTS PVT. LTD. (DHPPL)** is working in big sector plants for construction of Turnkey projects of greater magnitude. And also Railway project work.

5.4.1 ASSOCIATES OF DHPPL:

The following are the associates of the Durga Hitech Projects Pvt. Ltd:

- M/s VALECHA ENGINEERING LTD., Mumbai having a turnover of more than Rs 600 crores. Valecha group has authorized us for working and bidding big construction packages on their behalf.
- M/s Eskay Buildworks Pvt. Ltd, Bhilai for executing the Turnkey Electrical works of Transmission Lines ranging from voltage 400KV, 220 KV, 132 KV ,etc and also they are highly adept in working for any type of Electrical works.
- M/s Bilaspur Plastic Industries, Bilaspur who is an Experienced and reputed Track Laying Contractor of South East Central Railway, Bilaspur and has the merit & expertise of being a very successful agency for the works.
- M/s Kusum Trading Company, Gorakpur (U.P) who is very well adept in Signal and Telecommunications working in various Railways.

COMPANIES :

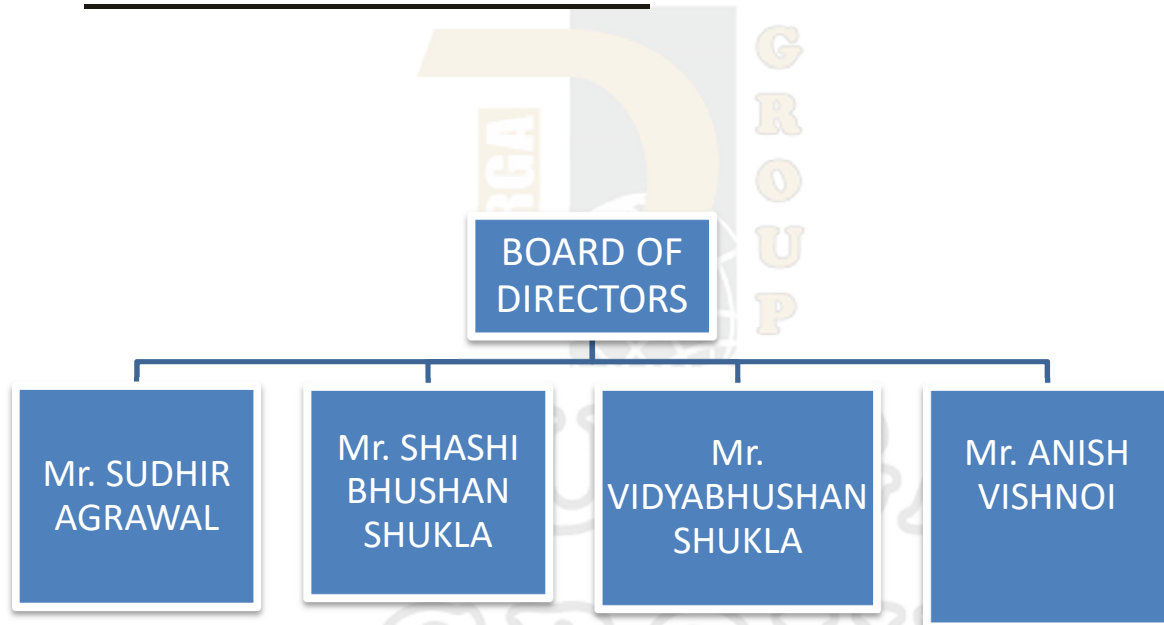
DURGA CARRIERS PVT. LTD.
PAN NO. : AAACD8178P
TIN NP. : 22512500507

DURGA HITECH PROJ. PVT. LTD.
PAN NO. : AADC05242K
TIN NO. : 22841802459

DURGA CONTINENTAL PVT. LTD.
PAN NO. : AACCD0712H
TIN NO. : 22841802459

GURGA GYPSUM VENTURES PVT. LTD.
DURGA CORPORATE PVT. LTD.
PAN NO. : AACCD7736R

6. BOARD OF DIRECTORS:



Mr. Sudhir Agrawal

Mail Id:-sudhir@dcpl.org, Mob.9977733333

Mr. Shashi Bhusahan Shukla

Mail Id:- shashi@dcpl.org, Mob. 9826911111

Mr. Vidyabhushan Shukla

Mail Id:-vidyabhushan@dcpl.org Mob.9977711111

Mr. Anish Vishnoi

Mail Id:- anish.vishnoi@dcpl.org Mob. 9926101111

COMPANIES :

DURGA CARRIERS PVT. LTD.
PAN NO. : AAACD8178P
TIN NP. : 22512500507

DURGA HITECH PROJ. PVT. LTD.
PAN NO. : AADC05242K
TIN NO. : 22841802459

DURGA CONTINENTAL PVT. LTD.
PAN NO. : AACCD0712H
TIN NO. : 22841802459

GURGA GYPSUM VENTURES PVT. LTD.
DURGA CORPORATE PVT. LTD.
PAN NO. : AACCD7736R

7. HEAD OFFICE:

STATE	PLACE	ADDRESS
Chhattisgarh	Baloda Bazar	Near Kisan Rice Mill, Lawan Road, Baloda Bazaar, Raipur (C.G)

8. BRANCH OFFICES:

S.NO	STATE	PLACE	ADDRESS
1	Chhattisgarh	Raipur	B-3 Sector-3, DevendraNager, in Front of Heritage Hospital, Raipur
2	Chhattisgarh	Bilaspur	Near Tifara Rly Crosng, DD complex, House NO.4
3	Chhattisgarh	Bhilai	C&F Agent of L.I.P.L, Opp. FCI Godown, Hathkhoj
4	Chhattisgarh	Arasmeta	Arasmeta Cement Plant, P.O. Gopalnagar
5	Chhattisgarh	Sonadih	Lafarge India Private Ltd. Sonadih, Raipur (C.G.)
6	Chhattisgarh	Ambuja	Ambuja Cement Plant, Rawan, Raipur(C.G.)
7	Chhattisgarh	Grasim	Grasim Cement Plant Rawan, Raipur(C.G)
8	Chhattisgarh	Ultratech	Ultratech Cement Ltd., Hirmi, Raipur
9	Orissa	Paradeep	Gaurav Vihar, HIG-38, Madhuban, Paradeep, Distt: Jagatsinghpur, (O.R.)
10	Orissa	Cuttack	101, Mega Tech Tower, Kalyani Nagar, Madhupatna, Cuttack (O.R.)

COMPANIES :

DURGA CARRIERS PVT. LTD.
PAN NO. : AAACD8178P
TIN NP. : 22512500507

DURGA HITECH PROJ. PVT. LTD.
PAN NO. : AADCDS242K
TIN NO. : 22841802459

DURGA CONTINENTAL PVT. LTD.
PAN NO. : AACCD0712H
TIN NO. : 22841802459

DURGA GYPSUM VENTURES PVT. LTD.
DURGA CORPORATE PVT. LTD.
PAN NO. : AACCD7736R

Annexure - 1

DURGA CARRIERS PVT. LTD. LIST OF OWN & Attached FLEET

Sl. No.	Registration No.	Description	Company	MAKE	MODEL
1	CG-04ZC/0996	10 Wheelers	Tata Motors	LPT-2213	1996
2	CG-04ZC/1002	10 Wheelers	Tata Motors	LPT-2213	1996
3	CG-04ZC/1004	10 Wheelers	Tata Motors	LPT-2213	1996
4	CG-04ZC/1007	10 Wheelers	Tata Motors	LPT-2213	1996
5	CG-04ZC/1008	10 Wheelers	Tata Motors	LPT-2213	1996
6	CG-04ZC/1013	10 Wheelers	Tata Motors	LPT-2213	1996
7	CG04ZC/1014	10 Wheelers	Tata Motors	LPT-2213	1996
8	CG-04ZC/1017	10 Wheelers	Tata Motors	LPT-2213	1997
9	CG-04JA/7698	10 Wheelers	Tata Motors	TATA-2515	2000
10	CG-04JA/7696	10 Wheelers	Tata Motors	TATA-2515	2000
11	CG-04/6001	10 Wheelers	Tata Motors	TATA-2515	2001
12	CG-04/6605	10 Wheelers	Tata Motors	TATA-2515	2001
13	CG-04/6607	10 Wheelers	Tata Motors	TATA-2515	2001
14	CG-04/6608	10 Wheelers	Tata Motors	TATA-2515	2001
15	CG-04A/8375	10 Wheelers	Ashok Leyland	LY-2214	2001
16	CG-04JA/7699	10 Wheelers	Tata Motors	TATA-2515	2001
17	CG-04JB/6142	10 Wheelers	Tata Motors	TATA-2515	2001
18	CG-04JB/6144	10 Wheelers	Tata Motors	TATA-2515	2001
19	CG-04G/0244	10 Wheelers	Ashok Leyland	LEYLAND-2214	2001
20	CG-04G/0344	10 Wheelers	Ashok Leyland	LEYLAND-2214	2001
21	CG-04G/0263	10 Wheelers	Tata Motors	TATA-2515	2001
22	CG-04G/0396	10 Wheelers	Tata Motors	TATA-2515	2002
23	CG-04JA/7910	10 Wheelers	Ashok Leyland	LY-2214	2003
24	CG-04JA/7909	10 Wheelers	Ashok Leyland	LY-2214	2003
25	CG-04JA/7908	10 Wheelers	Ashok Leyland	LY-2214	2003
26	CG-04G/3412	10 Wheelers	Ashok Leyland	LY-2214	2003
27	CG-04G/3413	10 Wheelers	Ashok Leyland	LY-2214	2003
28	CG-04G/7047	10 Wheelers	Tata Motors	TATA-2515	2003
29	CG-04G/7407	10 Wheelers	Tata Motors	TATA-2515	2003

COMPANIES :

DURGA CARRIERS PVT. LTD.
PAN NO. : AAACD8178P
TIN NP. : 22512500507

DURGA HITECH PROJ. PVT. LTD.
PAN NO. : AADCDS242K
TIN NO. : 22841802459

DURGA CONTINENTAL PVT. LTD.
PAN NO. : AACCD0712H
TIN NO. : 22841802459

DURGA GYPSUM VENTURES PVT. LTD.
DURGA CORPORATE PVT. LTD.
PAN NO. : AACCD7736R

30	CG-04G/3722	10 Wheelers	Ashok Leyland	LY-2214	2003
31	CG04/G3723	10 Wheelers	Ashok Leyland	LY-2214	2003
32	CG-04G/3904	10 Wheelers	Ashok Leyland	LY-2214	2003
33	CG-04G/3905	10 Wheelers	Ashok Leyland	LY-2214	2003
34	CG-04JB/6138	10 Wheelers	Tata Motors	TATA-2515EX	2003
35	CG04JC/1848	10 Wheelers	Tata Motors	TATA-2515EX	2003
36	CG04JC/1842	10 Wheelers	Tata Motors	TATA-2515EX	2003
37	CG04JC/1843	10 Wheelers	Tata Motors	TATA-2515EX	2003
38	CG04JC/1847	10 Wheelers	Tata Motors	TATA-2515EX	2003
39	CG-04G/5562	10 Wheelers	Ashok Leyland	LY-2214	2004
40	CG-04G/5563	10 Wheelers	Ashok Leyland	LY-2214	2004
41	CG-04G/5564	10 Wheelers	Ashok Leyland	LY-2214	2004
42	CG-04G/5622	10 Wheelers	Ashok Leyland	LY-2214	2004
43	CG-04G/5623	10 Wheelers	Ashok Leyland	LY-2214	2004
44	CG-04G/5624	10 Wheelers	Ashok Leyland	LY-2214	2004
45	CG-04G/5823	10 Wheelers	Ashok Leyland	LY-2214	2004
46	CG-04G/5824	10 Wheelers	Ashok Leyland	LY-2214	2004
47	CG-04G/5825	10 Wheelers	Ashok Leyland	LY-2214	2004
48	CG-04G/5827	10 Wheelers	Ashok Leyland	LY-2214	2004
49	CG-04G/6233	10 Wheelers	Ashok Leyland	LY-2214	2004
50	CG-04G/6236	10 Wheelers	Ashok Leyland	LY-2214	2004
51	CG-04G/6237	10 Wheelers	Ashok Leyland	LY-2214	2004
52	CG-04G/7444	10 Wheelers	Tata Motors	TATA-2515	2004
53	CG-04G/8444	10 Wheelers	Tata Motors	TATA-2515	2004
54	CG-04G/6523	10 Wheelers	Tata Motors	TATA-2515	2004
55	CG-04JA/7906	10 Wheelers	Tata Motors	TATA-2515	2004
56	CG-04G/8388	10 Wheelers	Tata Motors	TATA-2515	2004
57	CG04JC/1846	10 Wheelers	Tata Motors	TATA-2515EX	2004
58	CG-04JB/6143	14 Wheelers	Tata Motors	TATA-3516CEX	2005
59	CG04JC/1844	14 Wheelers	Tata Motors	TATA-3516CEX	2005
60	CG-04JB/6141	14 Wheelers	Tata Motors	TATA-3516CEX	2005
61	CG-04J/0725	10 Wheelers	Tata Motors	TATA-2515EX	2005
62	CG-04J/0726	10 Wheelers	Tata Motors	TATA-2515EX	2005
63	CG-04J/1381	10 Wheelers	Tata Motors	TATA-2515EX	2005
64	CG-04J/1463	10 Wheelers	Tata Motors	TATA-2515EX	2005
65	CG-04J/1496	10 Wheelers	Tata Motors	TATA-2515EX	2005

COMPANIES :

DURGA CARRIERS PVT. LTD.
 PAN NO. : AAACD8178P
 TIN NP. : 22512500507

DURGA HITECH PROJ. PVT. LTD.
 PAN NO. : AADCDS242K
 TIN NO. : 22841802459

DURGA CONTINENTAL PVT. LTD.
 PAN NO. : AACCD0712H
 TIN NO. : 22841802459

DURGA GYPSUM VENTURES PVT. LTD.
DURGA CORPORATE PVT. LTD.
 PAN NO. : AACCD7736R

66	CG-04J/3796	10 Wheelers	Tata Motors	TATA-2515EX	2005
67	CG-04J5863	10 Wheelers	Tata Motors	TATA-2515CEX	2005
68	CG-04J/6270	10 Wheelers	Tata Motors	TATA-2515	2006
69	CG-04J/5347	10 Wheelers	Tata Motors	TATA-2518CEX	2006
70	CG-04G/6269	10 Wheelers	Tata Motors	TATA-2515CEX	2006
71	CG-04G/5986	10 Wheelers	Tata Motors	TATA-2515CEX	2006
72	CG10C/2114	18 wheelers	Tata Motors	4018 trip traller	2006
73	CG10C/2214	18 wheelers	Tata Motors	4018 trip traller	2006
74	CG10C/2014	18 wheelers	Tata Motors	4018 trip traller	2006
75	CG04JA/7611	18 wheelers	Tata Motors	4018 trip traller	2007
76	CG04JB/6140	10 Wheelers	Tata Motors	TATA-2515CEX	2007
77	CG04JC/2118	10 Wheelers	Tata Motors	TATA-2515CEX	2007
78	OR-05J/7829	18 Wheelers	Tata Motors	LPT-4018 TC	2007
79	OR-05J/7929	18 Wheelers	Tata Motors	LPT-4018 TC	2007
80	OR-05J/8029	18 Wheelers	Tata Motors	LPT-4018 TC	2007
81	OR-05J/8129	18 Wheelers	Tata Motors	LPT-4018 TC	2007
82	OR-05J/8229	18 Wheelers	Tata Motors	LPT-4018 TC	2007
83	OR-05J/8329	18 Wheelers	Tata Motors	LPT-4018 TC	2007
84	OR-05J/8429	18 Wheelers	Tata Motors	LPT-4018 TC	2007
85	OR-05J/8529	18 Wheelers	Tata Motors	LPT-4018 TC	2007
86	OR-05J/8629	18 Wheelers	Tata Motors	LPT-4018 TC	2007
87	OR-05J/7729	18 Wheelers	Tata Motors	LPT-4018 TC	2008
88	CG-04JB/9858	18 Wheelers	Tata Motors	LPT-4018 TC	2010
89	CG-04JB/9905	18 Wheelers	Tata Motors	LPT-4018 TC	2010
90	CG-04JC/0934	18 Wheelers	Tata Motors	LPT-4018 TC	2010
91	CG-04JC/0935	18 Wheelers	Tata Motors	LPT-4018 TC	2010
92	CG-04JC/0937	18 Wheelers	Tata Motors	LPT-4018 TC	2010
93	CG-04JC/1688	18 Wheelers	Tata Motors	LPT-4018 TC	2011
94	CG-04JC/1689	18 Wheelers	Tata Motors	LPT-4018 TC	2011
95	CG-04JC/1697	18 Wheelers	Tata Motors	LPT-4018 TC	2011
96	CG-04JC/1699	18 Wheelers	Tata Motors	LPT-4018 TC	2011
97	CG-04JC/6920	18 Wheelers	Tata Motors	LPT-4018 TC	2011
98	CG-04JC/9796	18 Wheelers	Tata Motors	LPT-4018 TC	2011
99	CG04JC/2550	18 Wheelers	Tata Motors	LPT-4018 TC	2011
100	CG04JC/2553	18 Wheelers	Tata Motors	LPT-4018 TC	2011

COMPANIES :

DURGA CARRIERS PVT. LTD.
 PAN NO. : AAACD8178P
 TIN NP. : 22512500507

DURGA HITECH PROJ. PVT. LTD.
 PAN NO. : AADC05242K
 TIN NO. : 22841802459

DURGA CONTINENTAL PVT. LTD.
 PAN NO. : AACCD0712H
 TIN NO. : 22841802459

DURGA GYPSUM VENTURES PVT. LTD.
DURGA CORPORATE PVT. LTD.
 PAN NO. : AACCD7736R

101	CG04JC/2554	18 Wheelers	Tata Motors	LPT-4018 TC	2011
102	OR09T/5811	12 Wheelers	Tata Motors	LPT-3118 LPT	2011
103	OR09T/5911	12 Wheelers	Tata Motors	LPT-3118 LPT	2011
104	OR09T/6011	12 Wheelers	Tata Motors	LPT-3118 LPT	2011
105	OR09T/6111	12 Wheelers	Tata Motors	LPT-3118 LPT	2011
106	CG04JC/6293	12 Wheelers	Tata Motors	LPT-3118 LPT	2012
107	CG04JC/6296	12 Wheelers	Tata Motors	LPT-3118 LPT	2012
108	CG04JC/8450	12 Wheelers	Tata Motors	LPT-3118 LPT	2012
109	CG-04JC/8452	12 Wheelers	Tata Motors	LPT-3118 LPT	2012
110	CG04JC/8096	18 Wheelers	Tata Motors	LPT-4018 TC	2012
111	CG04JC/8097	18 Wheelers	Tata Motors	LPT-4018 TC	2012
112	CG04JC/8398	18 Wheelers	Tata Motors	LPT-4018 TC	2012
113	CG22C/0363	18 Wheelers	Tata Motors	Trip Traller	2014
114	CG22C/0364	18 Wheelers	Tata Motors	Trip Traller	2014
115	CG22C/0421	18 Wheelers	Tata Motors	Trip Traller	2014
116	CG22C/0422	18 Wheelers	Tata Motors	Trip Traller	2014
117	CG22C/0423	18 Wheelers	Tata Motors	Trip Traller	2014
118	CG22C/0424	18 Wheelers	Tata Motors	Trip Traller	2014
119	CG22C/0425	18 Wheelers	Tata Motors	LPT-4018 TC	2014
120	CG22C/0429	12 Wheelers	Tata Motors	LPT-3118 LPT	2014
121	CG22C/0430	12 Wheelers	Tata Motors	LPT-3118 LPT	2014
122	CG22C/0431	12 Wheelers	Tata Motors	LPT-3118 LPT	2014
123	CG22C/0432	12 Wheelers	Tata Motors	LPT-3118 LPT	2014

COMPANIES

COMPANIES :

DURGA CARRIERS PVT. LTD.
PAN NO. : AAACD8178P
TIN NP. : 22512500507

DURGA HITECH PROJ. PVT. LTD.
PAN NO. : AADC05242K
TIN NO. : 22841802459

DURGA CONTINENTAL PVT. LTD.
PAN NO. : AACCD0712H
TIN NO. : 22841802459

GURGA GYPSUM VENTURES PVT. LTD.
DURGA CORPORATE PVT. LTD.
PAN NO. : AACCD7736R

List of Machinery

Sl.No.	Type of Equipment	Qty	Make	Year of Purchase	Remarks
A) Civil Construction Work					
1	Self Loading Tranjit Mixture Machine	1 Nos	Macon	2010	
2	Concrete Pump	1 Nos	Schwing Setter	2010	
3	Mixture Machine (RM 800)	1 Nos	Schwing Setter	2010	
4	Bar Cutting Machine	2 Nos	Rajat	2010	
5	Bar Binding Machine	2 Nos	Rajat	2010	
6	Beching Plant	1 Nos	Schwing Setter	2012	
7	Mixtire Machine	4 nos	Singh	2011	
8	Electrical Vibrator	8 Nos	Honda	2012	
9	Petrol Vibrator	11 Nos	Honda	2012	
10	Niddle (60/40/25)	50 Nos	Singh	2011	
11	Vecum Dewatering Pump	3 Nos	JVC	2012	
12	TrimixFlotter	4 Nos	JVC	2011	
13	Tranjit Mixture Machine	2 Nos	Schwing Setter/ AMW	2010	
14	Diesel Refuling Machine	1 Nos	Mahindra	2011	
15	Electronics Waybridge	1 Nos	AIWA	2011	
16	Genrator Set (80 KVA)	1 Nos	Kirlosker	2011	
17	Genrator Set (25 KVA)	1 Nos	Kirlosker	2011	
18	Genrator Set (10 KVA)	1 Nos	Kirlosker	2011	
19	Hydra (12 Ton)	1 Nos	Escort	2011	
20	Total Station Machine	1 Nos	Sokia	2011	
21	Watar Pump/Mud Pump	4 Nos	Kirlosker	2011	
22	Lezor Pipe	5000 Nos	Tata	2012	
23	Props	2000 Nos	Local	2011	
24	Clamp	50000 Nos	Singh	2012	
25	Shuttering Plate	3000 Sqm	Local	2011	
26	Tata DI-207	1 Nos	Tata	2008	
27	JCB	1 Nos	JCB	2009	
28	JCB	1 Nos	JCB	2011	

COMPANIES :

DURGA CARRIERS PVT. LTD.
PAN NO. : AAACD8178P
TIN NP. : 22512500507

DURGA HITECH PROJ. PVT. LTD.
PAN NO. : AADC05242K
TIN NO. : 22841802459

DURGA CONTINENTAL PVT. LTD.
PAN NO. : AACCD0712H
TIN NO. : 22841802459

DURGA GYPSUM VENTURES PVT. LTD.
DURGA CORPORATE PVT. LTD.
PAN NO. : AACCD7736R

B) Mining Work

1	Pocling Including Rock Braker (JCB -210)	1 Nos	Tata Hitachi	2011	
2	Hywa (Ashok Leyland)	10 Nos	Ashok Leyland	2007	
3	BackhoLodder	4 Nos	JCB	2011	
4	Dozer	2 Nos	CatterPiller	2011	
5	Watar Tanker	4 Nos	Mahindra	2012	
6	compressor Machine	2 Nos	Mahindra	2011	
7	Tractor Grader	1 Nos	Arjun Mahindra	2010	
8	Thoudo Light	2 Nos	Sokia	2012	
9	Auto Level	5 Nos	Sokia	2011	

Page - 02

Sl.No.	Type of Equipment	Qty	Make	Year of Purchase	Remarks
C) Road Construction Work					
1	Drum Mix Plant	1 Nos	Appolo	2011	
2	Vibro Roller (Double Drum)	1 Nos	L & T	2011	
3	Vibro Roller (Single Drum)	1 Nos	L & T	2010	
4	Pavar	1 Nos	Appolo	2011	
5	Hywa (Ashok Leyland)	4 Nos	Ashok Leyland	2008	
6	Static Roller	1 Nos	Local	2010	
7	Tata DI-207	1 Nos	Tata	2009	
8	JCB	1 Nos	JCB	2011	
9	Comprassor Machine	1 Nos	Mahindra	2010	

COMPANIES :

DURGA CARRIERS PVT. LTD.
PAN NO. : AAACD8178P
TIN NP. : 22512500507

DURGA HITECH PROJ. PVT. LTD.
PAN NO. : AADC05242K
TIN NO. : 22841802459

DURGA CONTINENTAL PVT. LTD.
PAN NO. : AACCD0712H
TIN NO. : 22841802459

GURGA GYPSUM VENTURES PVT. LTD.
DURGA CORPORATE PVT. LTD.
PAN NO. : AACCD7736R

D) Electrical Equipment					
1	Welding Machine	6 Nos		2009	
2	Three Phase Drill Machine	1 Nos		2008	
3	Single Phase Drill Machine	6 Nos		2009	
4	Gas Cutter Sets	2 Nos		2010	
5	Mager 0 - 5000v	3 Nos		2011	
6	Mager 0 - 500v	1 Nos		2011	
7	Toung Tester 0-1000A-AC & DC	3 Nos		2010	
8	Chain Block - 2 Tons	2 Nos		2011	
9	Combination Plyer's	14 Nos		2009	
10	Mini Hexa Frame	20 Nos		2010	
11	Big Hexa Frame	10 Nos		2011	
12	Ring Spanner Set 8-9 to 36-42	4 Sets		2011	
13	Ring Spanner Set 6-7 to 36-42	5 Sets		2011	
14	Pipe Wrinch	2 Nos		2011	
15	Table Vice	2 Nos		2009	
16	Hand Grinder	2 Nos		2011	
17	Cable Cutter	2 Nos		2011	
18	H.T.Cable End Termination Tool Kit	2 Nos		2011	
19	Multimeter's	8 Nos		2011	
20	Hamer's 200g - 2000g	9 Nos		2011	
21	Bearing Puller	2 Nos		2011	
22	Stand For Cable laying	14 Nos		2011	
23	Earth Tester	2 Nos		2011	
24	Matirial Transporting Use- DI Pickup Van	3 Nos		2009	
25	Holsha Cutter Set 16mm to 100mm	5 Sets		2011	
26	Screw Driver All type	10 Sets		2011	
27	Nose Plyer's	8 Nos		2011	
28	CirclipPliyer	4 Nos		2009	
29	Chiseals	10 Nos		2009	
30	Measuring Tap - 50mt	2 Nos		2009	

COMPANIES :

DURGA CARRIERS PVT. LTD.
PAN NO. : AAACD8178P
TIN NP. : 22512500507

DURGA HITECH PROJ. PVT. LTD.
PAN NO. : AADC05242K
TIN NO. : 22841802459

DURGA CONTINENTAL PVT. LTD.
PAN NO. : AACCD0712H
TIN NO. : 22841802459

GURGA GYPSUM VENTURES PVT. LTD.
DURGA CORPORATE PVT. LTD.
PAN NO. : AACCD7736R

E) Lab Testing Equipment

1	Diimod Cutter Machine	1 Nos	Boch	2011	
2	AIV Testing Machine	1 Nos	R.H.Agency	2011	
3	CBR Testing Machine	1 Nos	R.H.Agency	2010	
4	Cube Testing Machine	1 Nos	R.H.Agency	2010	
5	Core Cutter	4 Nos	R.H.Agency	2009	
6	Field Compaction Test Machine	8 Nos	R.H.Agency	2010	
7	BT % Test Machine	1 Nos	R.H.Agency	2009	
8	Sand Screening	1 Nos	R.H.Agency	2010	
9	Slum Cone	1 Nos	R.H.Agency	2009	
10	Oven	1 Nos	R.H.Agency	2010	
11	Weight Machine	3 Nos	R.H.Agency	2010	

COMPANIES :

DURGA CARRIERS PVT. LTD.
PAN NO. : AAACD8178P
TIN NP. : 22512500507

DURGA HITECH PROJ. PVT. LTD.
PAN NO. : AADC05242K
TIN NO. : 22841802459

DURGA CONTINENTAL PVT. LTD.
PAN NO. : AACCD0712H
TIN NO. : 22841802459

GURGA GYPSUM VENTURES PVT. LTD.
DURGA CORPORATE PVT. LTD.
PAN NO. : AACCD7736R

M/s DurgaHitech Projects Pvt. Ltd. , Baloda Bazar

Details of Staff (CIVIL WORK)

Sl.No.	Name of Staff	Position	Education	Expriance
1	Chandan Karmaker	Project Manager	M. Com.	15 Year
2	Sudhir Kumar	Civil Engineer	Diploma in Civil Engineering	12 Year
3	Subhash Singh	Civil Engineer	Diploma in Civil Engineering	17 Year
4	SeemantVerma	Purchase Manager	M. Com.	9 Year
5	D. Markandey	Survayor	ITI	10 Year
6	D. Partho	Survayor	ITI	8 Year
7	Ranjan Sharma	Site Incharge	BSC	14 Year
8	RajuManhare	Survayor	ITI	4 Year
9	GhanshyamVerma	Lab Tech.	BSC	9 Year
10	M. Samanto	Lab Tech.	BSC	11 Year
11	Mahendra Sharma	Supervisor	M.com	7 Year
12	Arun Sharma	Supervisor	BSC	9 Year
13	Dhiraj Singh	Supervisor	BA	6 Year
14	Gopal Singh	Supervisor	M.com	4 Year
15	Neeraj Singh	Supervisor	M.com	3 Year
16	BhuneswarMarkandey	Supervisor	BSC	9 Year
17	GhanshyamSahu	Supervisor	BA	8 Year

COMPANIES

COMPANIES :

DURGA CARRIERS PVT. LTD.
PAN NO. : AAACD8178P
TIN NP. : 22512500507

DURGA HITECH PROJ. PVT. LTD.
PAN NO. : AADC05242K
TIN NO. : 22841802459

DURGA CONTINENTAL PVT. LTD.
PAN NO. : AACCD0712H
TIN NO. : 22841802459

GURGA GYPSUM VENTURES PVT. LTD.
DURGA CORPORATE PVT. LTD.
PAN NO. : AACCD7736R

M/s Durga Group Of Companies, Baloda Bazar

Details of Staff (Accounts Department)

Sl.No.	Name of Staff	Position	Education	Expriance
1	RakeshPandey	Sr. Accountant	M.Com	12 Years
2	Devesh Kumar Sao	Accounts	B.com	6 Years

M/s Durga Carriers Pvt. Ltd., Baloda Bazar

Details of Staff (Cash Department)

Sl.No.	Name of Staff	Position	Education	Expriance
1	Heera Sahu	Head Cashier	M.Com	14 Years
2	Jagdish Kanojee	Asst. Cashier	M.A. (Eco.)	7 Years

M/s Durga Carriers Pvt. Ltd., Baloda Bazar

Details of Staff (Billing Department)

Sl.No.	Name of Staff	Position	Education	Expriance
1	UttamVerma	Billing Manager	M.A.	7 Years
2	Om PrakashDevnani	Billing Manager	B.A., B.Sc.	6 Years
3	MahendraYadav	Assistant Billing	B.Com	6 Years
4	VedPrakashSen	Assistant Billing	12th, DCA	4 Years
5	Taman Chandrakar	Assistant Billing	12th	6 Years
6	Rakesh Kumar Sahu	Assistant Billing	DCA	6 Years
7	DheerajDevangan	Assistant Billing	M.Com	6 Years

COMPANIES :

DURGA CARRIERS PVT. LTD.
PAN NO. : AAACD8178P
TIN NP. : 22512500507

DURGA HITECH PROJ. PVT. LTD.
PAN NO. : AADC05242K
TIN NO. : 22841802459

DURGA CONTINENTAL PVT. LTD.
PAN NO. : AACCD0712H
TIN NO. : 22841802459

GURGA GYPSUM VENTURES PVT. LTD.
DURGA CORPORATE PVT. LTD.
PAN NO. : AACCD7736R

M/s Durga Carriers Pvt. Ltd., Baloda Bazar

Details of Staff (Vehicle Department)

Sl.No.	Name of Staff	Position	Education	Expriance
1	Manoj Singh	Head Logistic	M.A.	12 Years
2	Ashok Singh	Supervisor	M.sc. (Geology)	10 Years
3	Mohan Sonwani	Assistant	B.A.	8 Years
4	VinodChandrakar	Assistant	B.A.	8 Years
5	JagguVaishnaw	Assistant	B.Com	8 Years
6	Vipul Patel	Assistant	B.A.	6 Years
7	EklavyaKanojee	Assistant	12th	7 Years

M/s Durga Carriers Pvt. Ltd., Baloda Bazar

Details of Staff (Vehicle Repairing And Truck Division)

Sl.No.	Name of Staff	Position	Education	Expriance
1	S.N. Momaya	Manager(Vehicle Repairing)	M.A.	13 Years
2	Ram Gopal Verma	Assistant Vehicle	12th	9 Years
3	Indrakumar Tandan	Driver	I.T.I.	7 years
4	Manoj Tandan	Driver	12th	5 Years
5	Umendra Sahu	V. maintenance	I.T.I.	7 years
6	Ram Shankar Kanojee	Greaser	12th	5 Years
7	Pankaj kumar	Greaser	12th	5 Years
8	Lalit Soni	Manager(Truck Div)	M.Com, M.A.	20 Years
9	Bishambhar Yadav	Assistant	M.A., PGDCA	7 years
10	Arpan Goverdhan	A.G.M	B.Com	5 Years
11	NilkanthVerma	Assistant	M.A., PGDCA	10 years

M/s Durga Carriers Pvt. Ltd., Baloda Bazar

Details of Staff (Logistic And Networking Department)

Sl.No.	Name of Staff	Position	Education	Expriance
1	Raju Parwani	Manager Logistic	M.A.	15 Years
2	Sandeep Saraf	Assistant	M.A.	15 Years
3	Ravindra Jain	Assistant	B.A.	7 Years
4	Manjeet Kunwar Singh	Networking Incharge	PGDCA	6 Years

COMPANIES :

DURGA CARRIERS PVT. LTD.
PAN NO. : AAACD8178P
TIN NP. : 22512500507

DURGA HITECH PROJ. PVT. LTD.
PAN NO. : AADC05242K
TIN NO. : 22841802459

DURGA CONTINENTAL PVT. LTD.
PAN NO. : AACCD0712H
TIN NO. : 22841802459

GURGA GYPSUM VENTURES PVT. LTD.
DURGA CORPORATE PVT. LTD.
PAN NO. : AACCD7736R

M/s Durga Carriers Pvt. Ltd., Baloda Bazar

Details of Staff (Dump)

Sl.No.	Name of Staff	Position	Education	Expriance
1	Abhisekh Wany	Computer Operator	PGDCA	5 years
2	Krishnakant Tiwari	Supervisor	B.A.	6 Years
3	Kamlesh Chandrakar	Supervisor	12th	7 Years
4	Sita Ram Vishwakarma	Supervisor	B.A.	8 Years
5	Chuda Mani Yadu	Computer Operator	DCA	8 Years

M/s Durga Carriers Pvt. Ltd., Baloda Bazar

Details of Staff (All Site)

Sl.No.	Name of Staff	Position	Expriance	Site Location
1	Ankit Shriwastawa	Computer Operator	8 Years	Ambuja
2	Duleshwar Sahu	Computer Operator	7 Years	Ambuja
3	Durgesh Verma	Logistic	8 Years	Ambuja
4	Raju Chandrakar	Logistic	10 Years	Ambuja
5	Net Ram Verma	Logistic	10 Years	Ambuja
6	Manish Chandrakar	Logistic	9 Years	Ambuja
7	Ashok Katoch	Logistic	9 Years	Hirmi
8	Dakeshwar Sahu	Computer Operator (Night/Day)	12 years	Hirmi
9	Kisan Sahu	Logistic	10 Years	Hirmi
10	Krishna Jaiswal	Logistic	10 Years	Hirmi
11	Tika Ram Sahu	Computer Operator (Night/Day)	8 years	Hirmi
12	Pramod Pandey	Cashier	15 Years	Sonadih
13	Bhagwat Bose	Computer Operator(Day/Night)	14 Years	Sonadih
14	Devendra Pratap Singh	SaftyIncharge	5 Years	Sonadih
15	Ganesh Ram	logistic	16 Years	Sonadih
16	Pankaj Naik	SaftyIncharge	10 Years	Sonadih
17	Tijendra Jagat	Computer Operator	8 Years	Sonadih

COMPANIES :

DURGA CARRIERS PVT. LTD.
PAN NO. : AAACD8178P
TIN NP. : 22512500507

DURGA HITECH PROJ. PVT. LTD.
PAN NO. : AADC05242K
TIN NO. : 22841802459

DURGA CONTINENTAL PVT. LTD.
PAN NO. : AACCD0712H
TIN NO. : 22841802459

GURGA GYPSUM VENTURES PVT. LTD.
DURGA CORPORATE PVT. LTD.
PAN NO. : AACCD7736R

M/s Durga Carriers Pvt. Ltd., Baloda Bazar

Details of Staff (Raipur)

Sl.No.	Name of Staff	Position	Expriance
1	K. Raju	Accountant	15 Years
2	SUDAMA VERMA	Accountant	14 Years
3	ASHISH JOSHI	Field Work	14 Years
4	CHANCHAL BANERJEE	Assistant	10 Years
5	MASOOM CHAUHAN	Assistant	10 Years
6	RAMESH RAI	Assistant	8 Years
7	L.P. GOSWAMI	Supervisor	9 Years
9	AMAR SINGH DHURUW	Supervisor	9 Years
10	YOGENDRA KUMAR DEWANGAN	Supervisor	7 Years
11	PANKAJ SHIKHA	Comp. operator	5 Years

M/s Durga Gypsum Ventures Pvt. Ltd., Baloda Bazar

Details of Staff (Gypsum Work)

Sl.No.	Name of Staff	Position	Qualification	Expriance
1	Pankaj Tiwari	Sr. Accountant	M.B.A	9 Years
2	Dinbandhu Verma	Asst. Accountant	B.Com	12 Years
3	Shailendra Vishnoi	Supervisor	I.T.I (Auto PLC)	5 Years
4	Santosh Goyal	Computer Operator	B.A.	5 Years

M/s Durga Continental Pvt. Ltd., Baloda Bazar

Details of Staff (Bhilai Dump)

Sl.No.	Name of Staff	Position	Education	Expriance
1	Mahendra Sahu	Incharge	B.Com	16 Years
2	Pankaj Dwivedi	Assistant	B.A.	12 Years
3	Hemraj Yadav	Assistant	D.C.A.	8 Years
4	Anant Kumar	Computer Operator	B.C.A.	6 Years
5	Shabbir Ahmed	Logistic	M.Com.	14 Years

COMPANIES :

DURGA CARRIERS PVT. LTD.
PAN NO. : AACD8178P
TIN NP. : 22512500507

DURGA HITECH PROJ. PVT. LTD.
PAN NO. : AADC05242K
TIN NO. : 22841802459

DURGA CONTINENTAL PVT. LTD.
PAN NO. : AACCD0712H
TIN NO. : 22841802459

GURGA GYPSUM VENTURES PVT. LTD.
DURGA CORPORATE PVT. LTD.
PAN NO. : AACCD7736R

Annexure - 4

M/s Durga Group of Industries, Baloda Bazar

List of our Client

Sl.No.	Name of Concern	Address
1	Lafarge India Private Limited,	Sonadih Cement Plant, Sonadih
		Arasmenta Cement Plant, Gopal Nagar
		Jojobera Cement Plant, Jamsedpur
		Mejia Cement Plant, Mejia
		Chittor Cement Plant, Chittorgarh
		Bhawani Cement Works, Haryana
2	Ambuja Cement Limited,	Ambuja Cement Plant (Unit Rawan, Bhatapara)
3	Ultratech Cement Limited	Hirmi Cement Works, Hirmi
		Rawan Cement Works, Rawan
4	ACC Limited	Mumbai

COMPANIES :

DURGA CARRIERS PVT. LTD.
PAN NO. : AAACD8178P
TIN NP. : 22512500507

DURGA HITECH PROJ. PVT. LTD.
PAN NO. : AADCDS242K
TIN NO. : 22841802459

DURGA CONTINENTAL PVT. LTD.
PAN NO. : AACCD0712H
TIN NO. : 22841802459

GURGA GYPSUM VENTURES PVT. LTD.
DURGA CORPORATE PVT. LTD.
PAN NO. : AACCD7736R

5	Shree Cement Ltd.	Vill-Khapradih, Teh-Simga, Batapara, Baloda Bazar (C.G.)
6	Emami Cement Ltd.	Vill- Risda, Suhela Road, Baloda Bazar (C.G.)
7	J.K.Lakshmi Cement Ltd.	Vill-Malpuri, Khurd Khasodih, P.O.-Ahiwara, Teh-Dhamdha, Durg (C.G.)
8	Bhilai Jaypee Cement Ltd.	Slag Road (Opp-Sector-4 NMOH) Bhilai Steel Plant Premis Bhilai, Durga (C.G)
9	Public Work Department	Baloda Bazar
10	Jindal Steel & Power Ltd.,	Kharsiya Road Raigarh
11	Larsen & Toubro Ltd.,	PB No. 979, Mount-Poonamallee Road, Manapakkam Chennai Pin-600089
12	Valecha Engineering Ltd.,	Mumbai
13	IFFCO Ltd.,	Vill- Musadia Dist. Jagatsinghpur, Paradeep (Orrissa)
14	Paradeep Phosphate Limited	Paradeep

COMPANIES :

DURGA CARRIERS PVT. LTD.
PAN NO. : AAACD8178P
TIN NP. : 22512500507

DURGA HITECH PROJ. PVT. LTD.
PAN NO. : AADC05242K
TIN NO. : 22841802459

DURGA CONTINENTAL PVT. LTD.
PAN NO. : AACCD0712H
TIN NO. : 22841802459

DURGA GYPSUM VENTURES PVT. LTD.
DURGA CORPORATE PVT. LTD.
PAN NO. : AACCD7736R

RAILWAY SIDING WORK PROFILE

OF
DURGA GROUP OF COMPANIES
BALODA BAZAR (C.G)

COMPANIES :

DURGA CARRIERS PVT. LTD.
PAN NO. : AAACD8178P
TIN NP. : 22512500507

DURGA HITECH PROJ. PVT. LTD.
PAN NO. : AADCDS242K
TIN NO. : 22841802459

DURGA CONTINENTAL PVT. LTD.
PAN NO. : AACCD0712H
TIN NO. : 22841802459

DURGA GYPSUM VENTURES PVT. LTD.
DURGA CORPORATE PVT. LTD.
PAN NO. : AACCD7736R

INTRODUCTION OF Railway Siding work Profile

- We Durga Group of Companies are dedicated to provide complete solution to companies in construction of Railway siding for their Plants. We have a group of Dedicated people who are Pioneers in their fields for providing various support services that are essential in construction of Railway siding projects, starting from Land Acquisition to commissioning of the projects.

Given below are the list of activities that are undertaken by us in Railway Siding projects.

1. Land acquit ion.
2. Electrical LT & HT line diversion (Supply & Execution).
3. Earthwork in Excavation and filling.
4. Approval from local bodies for Bridges, Culverts, Rub's & Rob's.
5. Construction of all civil structures.
6. Supply of Permanent Way ,Overhead Electrification ,Signaling & Telecom items.
7. Execution of Permanent way, Ohe & S&T.

We have recently completed railway corridor project of Lafarge India Pvt Ltd from Nipaniya to Sonadih Cement plant 26.2 TKM where we undertook & completed entire work from Land Acquit ion to complete commissioning of the project.

COMPANIES :

DURGA CARRIERS PVT. LTD.
PAN NO. : AAACD8178P
TIN NP. : 22512500507

DURGA HITECH PROJ. PVT. LTD.
PAN NO. : AADC05242K
TIN NO. : 22841802459

DURGA CONTINENTAL PVT. LTD.
PAN NO. : AACCD0712H
TIN NO. : 22841802459

GURGA GYPSUM VENTURES PVT. LTD.
DURGA CORPORATE PVT. LTD.
PAN NO. : AACCD7736R

TRACK MAINTENANCE PROFILE

- After commissioning of railway siding at Lafarge India Pvt. Ltd, Sonadih cement plant we have also started maintenance of track for them. Now we have complete set of manpower along with tools & tackles for complete maintenance of track.

List of Manpower for Track maintenance at LIPL.

Retired Railway Personal - 1 no.
P.way Engineer - 1 no
Job Specialized supervisor - 3 nos.
Mate - 3nos
Black smith - 3 nos.
Store keeper - 1no.
Labors - 40 nos

List of Tools & Tackles at LIPL.

Crow bar - 40 nos
Track Jack - 5 nos
Panja - 40 nos
Welding set - 1no
Hole machine - 1no
Abrasive cutting machine - 1 nos

COMPANIES :

DURGA CARRIERS PVT. LTD.
PAN NO. : AAACD8178P
TIN NP. : 22512500507

DURGA HITECH PROJ. PVT. LTD.
PAN NO. : AADCD5242K
TIN NO. : 22841802459

DURGA CONTINENTAL PVT. LTD.
PAN NO. : AACCD0712H
TIN NO. : 22841802459

GURGA GYPSUM VENTURES PVT. LTD.
DURGA CORPORATE PVT. LTD.
PAN NO. : AACCD7736R

STEPS INVOLVED IN CONSTRUCTION OF A RAILWAY SIDING PROJECT

1. Selection of consultant for preparation of DPR & ESP.
2. Preparation, Submission & Approval of DPR from Railway departments.
3. Land acquisition as per alignment provided in ESP.
4. Diversion of electrical crossings in the alignment.
5. Conducting earthwork as per approved L-section.
6. Getting approval for Bridges, Culverts, Rubs from local bodies.
7. Drawing approval for Bridges, culverts from concerned railway departments.
8. Construction of civil structures in the alignment.
9. Purchase of permanent way, Over head Electrification, Signaling & telecommunication equipments.
10. Execution of Permanent way, overhead electrification, Signaling & Telecommunication.
11. Submission of as build drawings of all activities.
12. Approval from engineering department of railways ,commercial notification from commercial department & siding code generation from operation department.
13. Commissioning of siding.

COMPANIES :

DURGA CARRIERS PVT. LTD.
PAN NO. : AAACD8178P
TIN NP. : 22512500507

DURGA HITECH PROJ. PVT. LTD.
PAN NO. : AADC05242K
TIN NO. : 22841802459

DURGA CONTINENTAL PVT. LTD.
PAN NO. : AACCD0712H
TIN NO. : 22841802459

DURGA GYPSUM VENTURES PVT. LTD.
DURGA CORPORATE PVT. LTD.
PAN NO. : AACCD7736R

SUMMARY OF WORK THAT WE HAVE DONE AT LIPL (SONADIH CEMENT PLANT)

- 19 km of land acquisition.
- Total length of track – 26.2 TKM
- Lead line – 19.2 TKM
- Yard – 7 TKM
- Point & Crossing – 14 Nos
- Manned Level Crossings (including LC approach road) – 11 nos
- Total LWR track on Lead line of 19.2 TKM
- Total culverts – 27 nos
- One Rub
- One Major bridge : Pilling foundation, PSC girder consisting of 17 spans, Length of each span 12.2 mts & length of total bridge 247 mts.
- Total Earthwork executed – 1,612,486 Cum
- Entire telecommunication system connecting all 11 level crossings and network of OFC cable connecting the entire siding to chief control at Raipur.
- 7100 mts of catchment drain in cutting area.
- Approval from irrigation & PWD department for all culverts, Bridges & RUB.
- Diversion of 4 nos HT line 2 nos of PGCIL & 2 nos CSPTCL.
- OHE execution 16.7 kms (Completed within 8 months).
- Diversion of 22 nos electrical crossing 10 nos 11kv, 5 nos 33kv & 7 nos 440v.

COMPANIES :

DURGA CARRIERS PVT. LTD.
PAN NO. : AAACD8178P
TIN NP. : 22512500507

DURGA HITECH PROJ. PVT. LTD.
PAN NO. : AADCDS242K
TIN NO. : 22841802459

DURGA CONTINENTAL PVT. LTD.
PAN NO. : AACCD0712H
TIN NO. : 22841802459

DURGA GYPSUM VENTURES PVT. LTD.
DURGA CORPORATE PVT. LTD.
PAN NO. : AACCD7736R

Land Acquisition

- The first process in land acquisition is getting list from the company the land which it want to buy or that come in the alignment of railway siding. Then identifying the category of land in order to take off the purchase process as different category of land requires different purchase process.
- CATEGORY OF LAND
- Land Owned by normal person.
- Land owned by SC/ST.
- Government Land.
- Disputed land.

Role of our Company in Land Acquisition

Land owned by a Normal Person: Purchase of land from that person and get it transferred in the name of the concerned company.

Land owned by SC/ST: Purchase of Land from SC/ST get order from District collector and get it registered in the name of concerned company.

Government Land: Getting approval from various government agencies, doing all the paper works on be half of the company and getting the land transferred in the name of the Company.

Disputed Land: Sometime some disputed land also comes in the way of land acquisition, our company gets the land Mutated with the help of Patwari and other agencies get the land transferred in the name of real owners, Purchase from them and get it registered in the name of company.

COMPANIES :

DURGA CARRIERS PVT. LTD.
PAN NO. : AAACD8178P
TIN NP. : 22512500507

DURGA HITECH PROJ. PVT. LTD.
PAN NO. : AADCDS242K
TIN NO. : 22841802459

DURGA CONTINENTAL PVT. LTD.
PAN NO. : AACCD0712H
TIN NO. : 22841802459

GURGA GYPSUM VENTURES PVT. LTD.
DURGA CORPORATE PVT. LTD.
PAN NO. : AACCD7736R

- If there is land acquisition by state government on behalf of the company, our organization also plays a vital role in getting the land for the company. Getting approval from various agencies like CIDCL and local administration in getting the land for the company.
- In certain areas where inhabitation are there but change in alignment is not permissible, as in case of near take off point in main line, Rehabilitation of inhabitants are required, in that case our company deals in rehabilitation of those people on behalf of company.
- Before transferring the land to the company its usage needs to be changed for example from change from Agricultural land to non agricultural land. On that aspect our company does that conversion on behalf of the company.
- Resolving various IR issues on behalf of the company.

COMPANIES :

DURGA CARRIERS PVT. LTD.
PAN NO. : AAACD8178P
TIN NP. : 22512500507

DURGA HITECH PROJ. PVT. LTD.
PAN NO. : AADC05242K
TIN NO. : 22841802459

DURGA CONTINENTAL PVT. LTD.
PAN NO. : AACCD0712H
TIN NO. : 22841802459

DURGA GYPSUM VENTURES PVT. LTD.
DURGA CORPORATE PVT. LTD.
PAN NO. : AACCD7736R

Electrical LT & HT line diversion

- We have complete set of manpower & machinery dedicated in diversion of LT & HT lines ranging from 11 to 400 kva. That work with complete safety, quality & on time delivery of work.

- List of manpower

Electrical Engineer – 1no

Supervisor- 4 nos

Highly efficient & skilled labors.

Equipments:

Hydra – 1 no

Welding machine – 2 nos

Drill machine – 3 nos

Gas cutting set – 2 nos

Meager (0-5000 volts) – 3 nos

Chain block (2 tons) – 2 nos

Tongue tester (0 to 10000A) AC & DC – 3 nos

Hand grinder – 2 nos

Hydraulic Cable cutter – 2 nos

HT cable end termination tool kit – 2 nos

Multimeters – 2nos

Stands for cable laying – 2 nos

And many more equipment to conduct work efficiently & on time.

COMPANIES :

DURGA CARRIERS PVT. LTD.
PAN NO. : AAACD8178P
TIN NP. : 22512500507

DURGA HITECH PROJ. PVT. LTD.
PAN NO. : AADCDS242K
TIN NO. : 22841802459

DURGA CONTINENTAL PVT. LTD.
PAN NO. : AACCD0712H
TIN NO. : 22841802459

GURGA GYPSUM VENTURES PVT. LTD.
DURGA CORPORATE PVT. LTD.
PAN NO. : AACCD7736R

Execution of earthwork in excavation and filling

We have dedicated resource both in term of Men & Machinery in executing earthwork both in term of quantity & quality. We are dedicated in completing the earthwork with all government & engineering norms within stipulated time frame.

List of Manpower for execution of earth wok.

1. Project Manager- 1 no.
2. Site engineer – 2 nos
3. Billing Engineer- 1 no
4. Surveyors- 2 nos
5. Site Supervisors- 11 no's
6. Vehicle & Machinery Mechanic- 2 nos
7. Lab technician – 2 nos

COMPANIES :

DURGA CARRIERS PVT. LTD.
PAN NO. : AAACD8178P
TIN NP. : 22512500507

DURGA HITECH PROJ. PVT. LTD.
PAN NO. : AADC05242K
TIN NO. : 22841802459

DURGA CONTINENTAL PVT. LTD.
PAN NO. : AACCD0712H
TIN NO. : 22841802459

GURGA GYPSUM VENTURES PVT. LTD.
DURGA CORPORATE PVT. LTD.
PAN NO. : AACCD7736R

List of equipment for executing earthwork

1. Excavators- 3 nos. (with 1 no breaker attachment)
2. Hyva- 12 nos.
3. Jcb Backhoe Loaders- 3 nos
4. Motor grader – 1no
5. Mechanical Soil Compactors- 2 nos
6. Dozer – 1 no
7. Water tanker – 3 nos.

Moreover we can increase the machinery as and when required to complete the projects on time.

List of Survey Equipments

1. Total Station with prism & stand – 1 set
2. Auto level – 2 sets.

COMPANIES :

DURGA CARRIERS PVT. LTD.
PAN NO. : AAACD8178P
TIN NP. : 22512500507

DURGA HITECH PROJ. PVT. LTD.
PAN NO. : AADC05242K
TIN NO. : 22841802459

DURGA CONTINENTAL PVT. LTD.
PAN NO. : AACCD0712H
TIN NO. : 22841802459

GURGA GYPSUM VENTURES PVT. LTD.
DURGA CORPORATE PVT. LTD.
PAN NO. : AACCD7736R

List of Laboratory equipments for earthwork testing.

1. CBR testing machine
2. Core Cutter – 10 set
3. Field compaction test machine – 1 set
4. Oven – 1no
5. Weight machine – 1 no.

COMPANIES :

DURGA CARRIERS PVT. LTD.
PAN NO. : AAACD8178P
TIN NP. : 22512500507

DURGA HITECH PROJ. PVT. LTD.
PAN NO. : AADCDS242K
TIN NO. : 22841802459

DURGA CONTINENTAL PVT. LTD.
PAN NO. : AACCD0712H
TIN NO. : 22841802459

DURGA GYPSUM VENTURES PVT. LTD.
DURGA CORPORATE PVT. LTD.
PAN NO. : AACCD7736R

Construction of civil structures

We have a complete set of highly skilled manpower, Efficient Labor gangs & machinery of civil construction work that work with high efficiency to complete the work with great quality & speed to get the project completed within stipulated time frame.

List of Employees dedicated to civil work:

1. Project Manager – 1no
2. Site Engineer – 4 nos
3. Planning Engineer- 1 no
4. Surveyor – 1 no
5. Supervisors – 9 nos
6. Lab Technician - 1 no

Highly efficient Labor gangs consisting of Carpenters, Masons, Rod fitters and helpers who can work efficiently complete the work with high efficiency & within stipulated time frame.

COMPANIES :

DURGA CARRIERS PVT. LTD.
PAN NO. : AAACD8178P
TIN NP. : 22512500507

DURGA HITECH PROJ. PVT. LTD.
PAN NO. : AADC05242K
TIN NO. : 22841802459

DURGA CONTINENTAL PVT. LTD.
PAN NO. : AACCD0712H
TIN NO. : 22841802459

DURGA GYPSUM VENTURES PVT. LTD.
DURGA CORPORATE PVT. LTD.
PAN NO. : AACCD7736R

Civil construction Equipments

- We have a complete set of civil construction equipments the details of which are given below.
- 1. Batching plant – 1 no
- 2. Transit Mixture – 2 nos
- 3. Self loading transit mixture machine – 1no
- 4. Shuttering & scaffolding materials.
- 5. Concrete Pump – 1no
- 6. Welding Machine – 2 nos
- 7. Gas Cutting machine – 2 nos
- 8. Mixture machine – 7 nos
- 9. Bar Cutting machine – 2nos
- 10. Bar Bending Machine – 2 nos
- 11. Stressing machine for PSC girder – 1 set
- 12. Grouting machine for PSC Girder – 1 set
- 13. RM – 800 mixture machine – 1 no
- 14. Hydra (14 tons) – 1no

COMPANIES :

DURGA CARRIERS PVT. LTD.
PAN NO. : AAACD8178P
TIN NP. : 22512500507

DURGA HITECH PROJ. PVT. LTD.
PAN NO. : AADC05242K
TIN NO. : 22841802459

DURGA CONTINENTAL PVT. LTD.
PAN NO. : AACCD0712H
TIN NO. : 22841802459

GURGA GYPSUM VENTURES PVT. LTD.
DURGA CORPORATE PVT. LTD.
PAN NO. : AACCD7736R

List of laboratory equipments for civil construction work

- Given below are the list of LABORATORY equipments for Civil construction work:
- 1. Cube testing machine – 1 no
- 2. Aggregate Impact Value machine (AIV)- 1 no
- 3. Sieve analysis (90 mm – 75 micron) – 1 set
- 4. Oven – 2 nos
- 5. Cube mould – 44 nos
- 6. Abrasion testing machine – 1 no
- 7. Weigh machine – 2 nos

COMPANIES :

DURGA CARRIERS PVT. LTD.
PAN NO. : AAACD8178P
TIN NP. : 22512500507

DURGA HITECH PROJ. PVT. LTD.
PAN NO. : AADC05242K
TIN NO. : 22841802459

DURGA CONTINENTAL PVT. LTD.
PAN NO. : AACCD0712H
TIN NO. : 22841802459

DURGA GYPSUM VENTURES PVT. LTD.
DURGA CORPORATE PVT. LTD.
PAN NO. : AACCD7736R

Supply of p.way, ohe , s&t materials

- We have tie up with various vendors for supply of Permanent Way, Signaling, overhead electrification & Telecom equipments all of which are RDSO approved. They will ensure supply of good quality materials to us as and when required.

We also have a team of dedicated purchase personals who ensure proper & in time supply of materials to us, so that no work gets hampered due to want or supply of materials from vendors.

COMPANIES :

DURGA CARRIERS PVT. LTD.
PAN NO. : AAACD8178P
TIN NP. : 22512500507

DURGA HITECH PROJ. PVT. LTD.
PAN NO. : AADCDS242K
TIN NO. : 22841802459

DURGA CONTINENTAL PVT. LTD.
PAN NO. : AACCD0712H
TIN NO. : 22841802459

DURGA GYPSUM VENTURES PVT. LTD.
DURGA CORPORATE PVT. LTD.
PAN NO. : AACCD7736R

Execution of P.way, ohe, S&T work

We have a complete dedicated team for execution of P.way, OHE, ST work who have varied experience in their fields to execute the work within stipulated time frame & with great quality. We also have various associates who are associated with us for execution of above work, Who have experience of more than 15 years in their respective fields in execution of above mentioned work.

List of manpower for execution of work:

1. P.way engineer – 1 no
2. Electronics & telecommunication engineer – 1 no
3. Electrical engineer – 1no
4. Cable jointing personal – 1 no
5. Supervisors – 9 nos.

COMPANIES :

DURGA CARRIERS PVT. LTD.
PAN NO. : AAACD8178P
TIN NP. : 22512500507

DURGA HITECH PROJ. PVT. LTD.
PAN NO. : AADCD5242K
TIN NO. : 22841802459

DURGA CONTINENTAL PVT. LTD.
PAN NO. : AACCD0712H
TIN NO. : 22841802459

DURGA GYPSUM VENTURES PVT. LTD.
DURGA CORPORATE PVT. LTD.
PAN NO. : AACCD7736R

List of machinery & equipments for execution of p.way,oh & st work

Given below are the list of machinery for execution of above work:

1. Trailers – 2 nos
2. Hydra – 2 nos
3. Jcb backhoe loader – 2 nos
4. Hyva – 3 nos
5. Hole machine – 2nos
6. Abrasive cutting machine – 1 no
7. Deep lorry – 2 nos
8. Hand dolly – 2 nos
9. Track jack – 3 nos
10. Crow bar – 60 nos
11. Panja – 50 nos
12. Motor trolley - 1 no
13. Cutting machine – 2 nos
14. Hole machine – 2 nos

COMPANIES :

DURGA CARRIERS PVT. LTD.
PAN NO. : AAACD8178P
TIN NP. : 22512500507

DURGA HITECH PROJ. PVT. LTD.
PAN NO. : AADCD5242K
TIN NO. : 22841802459

DURGA CONTINENTAL PVT. LTD.
PAN NO. : AACCD0712H
TIN NO. : 22841802459

GURGA GYPSUM VENTURES PVT. LTD.
DURGA CORPORATE PVT. LTD.
PAN NO. : AACCD7736R

15. Various type of spanners – 2sets
16. Wiring trolley – 1 no
17. Ladder trolley – 1no
18. Turfer – 3 nos
19. Pulley – 4 nos
20. Aluminum ladders- 4 nos
21. Stands for cable laying - 2 set
22. Multi meter – 2nos
23. Meager – 1no

List of laboratory equipments:

1. Version measurement kit – 1 set
2. Rail thermometer – 2 nos
3. P.way tool kit – 1 no
4. Cube moulds – 6 nos
5. Cube testing machine – 1 no
6. AIV machine – 1 no

COMPANIES :

DURGA CARRIERS PVT. LTD.
PAN NO. : AAACD8178P
TIN NP. : 22512500507

DURGA HITECH PROJ. PVT. LTD.
PAN NO. : AADCDS242K
TIN NO. : 22841802459

DURGA CONTINENTAL PVT. LTD.
PAN NO. : AACCD0712H
TIN NO. : 22841802459

GURGA GYPSUM VENTURES PVT. LTD.
DURGA CORPORATE PVT. LTD.
PAN NO. : AACCD7736R

EARTHWORK BEING EXECUTED AT LAFARGE INDIA PVT LTD



COMPANIES :

DURGA CARRIERS PVT. LTD.
PAN NO. : AAACD8178P
TIN NP. : 22512500507

DURGA HITECH PROJ. PVT. LTD.
PAN NO. : AADC05242K
TIN NO. : 22841802459

DURGA CONTINENTAL PVT. LTD.
PAN NO. : AACCD0712H
TIN NO. : 22841802459

GURGA GYPSUM VENTURES PVT. LTD.
DURGA CORPORATE PVT. LTD.
PAN NO. : AACCD7736R

PSC GURDER LAUNCHING AT JAMUNIA BRIDGE



COMPANIES :

DURGA CARRIERS PVT. LTD.
PAN NO. : AAACD8178P
TIN NP. : 22512500507

DURGA HITECH PROJ. PVT. LTD.
PAN NO. : AADCD5242K
TIN NO. : 22841802459

DURGA CONTINENTAL PVT. LTD.
PAN NO. : AACCD0712H
TIN NO. : 22841802459

GURGA GYPSUM VENTURES PVT. LTD.
DURGA CORPORATE PVT. LTD.
PAN NO. : AACCD7736R

VIEW OF JAMUNIA BRIDGE FROM THE TOP



COMPANIES :

DURGA CARRIERS PVT. LTD.
PAN NO. : AAACD8178P
TIN NP. : 22512500507

DURGA HITECH PROJ. PVT. LTD.
PAN NO. : AADC05242K
TIN NO. : 22841802459

DURGA CONTINENTAL PVT. LTD.
PAN NO. : AACCD0712H
TIN NO. : 22841802459

GURGA GYPSUM VENTURES PVT. LTD.
DURGA CORPORATE PVT. LTD.
PAN NO. : AACCD7736R

FIRST WRECK INTO SONADIH



COMPANIES :

DURGA CARRIERS PVT. LTD.
PAN NO. : AAACD8178P
TIN NP. : 22512500507

DURGA HITECH PROJ. PVT. LTD.
PAN NO. : AADC05242K
TIN NO. : 22841802459

DURGA CONTINENTAL PVT. LTD.
PAN NO. : AACCD0712H
TIN NO. : 22841802459

GURGA GYPSUM VENTURES PVT. LTD.
DURGA CORPORATE PVT. LTD.
PAN NO. : AACCD7736R



LARSEN & TOUBRO LIMITED

ENGINEERING, CONSTRUCTION & CONTRACTS DIVISION

Headquarters : Mount Poonamallee Road, Manapakkam, P.B. No. 979, Chennai - 600 089. Tel. : 2252 6000 / 2252 8000 Fax : +044-2249 3317

Ref. : LTCD/RC BU/KVS/LOI/DHPPL/1011/014 Dated 1st September 2010
E-mail : kvs@Intecc.com

Website : www.Intecc.com
www.larsentoubro.com

M/s. Durga Hitech Projects Private Limited
B-3, Sector-3, Devendra Nagar
In Front of Heritage Hospital
RAJPUR - 492 001
Chhattisgarh

Kind Attn: Mr Ajay Agarwal, Director

Dear Sir,

Sub: Bridge works for Railway Siding work for Lafarge Cement Plant at
Sonadih - Reg.

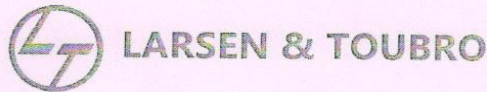
Ref: Your Offer No. DHPPL/ L&T/ LAFARGE/ SIDING/02 Dated 01.09.10

With reference to your above offer and the discussions we had at our office on 1st Sept ' 10, we are pleased to place our Letter of Intent on you for the construction of bridges for the Railway Siding package work from Nipania Station of South Eastern Railway to Sonadih Plant of Lafarge India Pvt. Ltd. as per details given below:

- (1) Scope: Construction of all the major and minor bridges including the ROB / RUBs as per the technical specifications/scope of work as in the contract between Lafarge India and L&T on back to back basis.
- (2) Price : The total order price for the above works shall be Rs.16.00 Cr. The item wise break up will be sent separately.
- (3) The payment terms shall be as given below:
 - i) 10% of the order value as interest free advance against submission of Bank Guarantee.
 - ii) 80% of payment against certified monthly running invoice subject to certification by Authorised PMC of Lafarge and Site Incharge of LIPL.

Contd.....2/-

Regd. Off : L&T House, Ballard Estate, P.O. Box 278, Mumbai - 400 001 • Phone : 2268 5656 • Fax : +022-2268 5856



Ref: LTCD/RCBU/KKRO/SS/ 95

Date: 06.06.2015

TO WHOMSOEVER IT MAY CONCERN

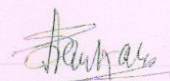
This is to Certify that M/s Durga Hitech Project Pvt. Ltd. (B-3 Sector-3, Devendra Nagar, in front of Heritage Hospital, Raipur – 492001, Chattishgarh) had completed the Railway Siding Project of 25KM, taking off from Nipania Station of SECR to Sonadih Cement Plant (Lafarge India Pvt. Ltd.).

The work comprises of complete civil works including Bridges, Piling, Culverts & Buildings, P-way, Ballast supply & spreading, Track linking, supply & erection of S&T etc. The volume of work entrusted to the party was around 70 Crore approximately. The line has been commissioned and first rake was operated on 19th Sept'2014.

We wish them all the success in future.

The Certificate is issued on the request of the party for facilitating his participation in various forthcoming tenders.

For Larsen & Toubro Ltd.



(Shovan Sarkar)
Cluster Head
Railway Construction Business Unit
Kolkata

Larsen & Toubro Limited, Construction,
Godrej Waterside Building, Tower-II, 11th Floor, Plot-5, Block-DP, Salt Lake, Kolkata-700091
Tel : +91-33-4414 1000, Fax : +91-33-4414 1155 www.Lntec.com
CIN - L99999MH1946PLC004768

Registered Office:
L&T House, N. M. Marg
Ballard Estate
Mumbai 400 001, INDIA

DURGA CARRIERS PVT. LTD.
PAN NO. : AAACD8178P
TIN NP. : 22512500507

DURGA HITECH PROJ. PVT. LTD.
PAN NO. : AADC05242K
TIN NO. : 22841802459

DURGA CONTINENTAL PVT. LTD.
PAN NO. : AACCD0712H
TIN NO. : 22841802459

GURGA GYPSUM VENTURES PVT. LTD.
DURGA CORPORATE PVT. LTD.
PAN NO. : AACCD7736R



Date: 27.01.2015

TO WHOME SOEVER IT MAY CONCERN

This is to certify that M/S: DURGA CONTINENTAL PVT. LTD. NEAR KISHAN RICE MILL, LAWAN ROAD, BALODA BAZAR (CHHATISGARH) has carried out the Railway Siding take off work – Sonadih cement plant of Lafarge India Pvt. Ltd at Baloda Bazar (Chhattisgarh). The detail of work carried out by them is mentioned below:

NAME OF WORK	Railway Corridor Project Of Lafarge India Pvt. Ltd.
NATURE OF WORK	Earthwork in excavation, filling & blanketing, Catchment drain, Level crossing Roads, Turfing & Other misc work.
CONTRACT VALUE	Rs. 57,94,75,533.00
CERTIFIED BILL VALUE	RS.57,09,09,989.00
DATE OF COMMENCEMENT	16th October 2007
DATE OF COMPLETION	31st December 2014
STATUS OF WORK	Completed.

They have executed the work with satisfaction by deploying highly skilled manpower and adequate machinery to complete the work within time frame. Their performance has been quite satisfactory. They can be relied upon for such type of work.

This certificate is being issued on DCPL's request for tendering purpose only.

For, Lafarge India Pvt. Ltd.

Amit Pidiha
(VP- Technical)
Project Manager
Railway Corridor Project
(Sonadih Cement Plant)

LAFARGE INDIA PRIVATE LIMITED

(CIN - U26940MH1999PTC119229)
Registered Office: Equinox Business Park (Peninsula Techno Park),
Tower-3, East Wing, 4th floor, Off Bandra-Kurla Complex, LBS Marg, Kurla (West), Mumbai 400 070 (E),
Mumbai 400 051 - India.
Phone: (91-22) 66306511 Fax: (91-22) 66306510
www.lafarge.in

Ref: LTCD/RC BU/KVS/LOI/DHPPL/1011/014
Dated 1st September 2010

/2/

- iii) 10% of the total order value against completion of work in all respects subject to submission of Performance Bank Guarantee for 10% of order value as per Lafarge format valid till completion of maintenance period along with Railway acceptance Certification.

An additional amount of 2.5% of the invoices shall be retained which will be released after integrated completion of total project.

All the above payments will be cleared on receipt of respective stage payment from Lafarge.

- 5) However, the reinforcement steel and L&T formwork materials will be supplied by L&T. L&T will discuss with DHPPL and decide the schedule of supply of these items. The landed procurement cost for reinforcement steel and hire charges for formwork material shall be deducted from the invoices of DHPPL.
- 6) Any extra works to be executed shall be carried out by DHPPL @ 85% of the rates to be finalised by Lafarge.
- 7) All terms and conditions of Lafarge Contract on L&T will apply for this work order and DHPPL will carry out the work strictly as per technical specifications and scope of work of Lafarge.


This may please be treated as our Letter of Intent and a formal work order with detailed scope of work and terms & conditions will follow shortly.

Please acknowledge receipt of this Letter of Intent.

Thanking you,

Yours faithfully

for LARSEN & TOUBRO LIMITED
ECC DIVISION



(K. VENKATASUBBU)
Sr. Deputy General Manager - Railway Projects

Received & Acknowledged

Subscribed
1/9/10



Print Date 24-Dec-2013 R5743500F
Print Time 17:10:18
Page 1 of 5

Order Number, Date 6450892 XP 16-oct-2006
Amendment Number, Date 13 24-dec-2013
Quotation Reference Your e-mail
Quotation Date 19th Jan 08

PURCHASE ORDER- AMENDMENT

Supplier Code 60010782
Shipped From DURGA CONTINENTAL PVT. LTD
NEAR KISAN RICE MILL
BALODA BAZAR
BALODA BAZAR 493 332
CG

Ship To Address LAFARGE INDIA PRIVATE LIMITED
SONADIH CEMENT PLANT; PO: RASEDA
VIA BALODABAZAR RAIPUR(CG)
BOARD 09993011991/2/3EXTN:250/251/338
TELE FAX:07727-272230
SONADIH 493332
CG

Phone Number 07727 223344, 222277

Contact Person Mr Sudhir Agrawal

Email Id rakeshpandey.bb@dcpl.org

Printed By PEETHA01

Currency Code INR

Comments

Item Number	Description	Line No	Rev	Quantity Ordered	UOM Description	Unit Price	Extended Price	Delivery Date
700203A07	RAILWAY TRACK MAINTENANCE	1.000	21		Units	.00	401,262,228.00	31/12/2013
910414C75D.660805.MM								

Total Order 401,262,228.00

Change No. 13

Subject: PO For earth work for railway sliding work from Nipania to Sonadih Cement plant.

Reference: LIPL order no. 6450892 XP dtd. 16.10.2006

Please refer to our above-mentioned order placed on you for earth work for railway sliding work from Nipania to Sonadih Cement plant.. We hereby changing/ amending our order as following:

LAFARGE INDIA PVT. LTD.

Signature

Name K P NAIR

Designation VICE PRESIDENT - PURCHASE (IGS)

Email Peethambaran.Nair@in.lafarge.com

Address LAFARGE INDIA PVT LTD

EASTERN OPERATION OFFICE

D BLOCK 4TH FLOOR

22 CAMAC STREET

KOLKATA, WB

700 016

COMPANIES :

DURGA CARRIERS PVT. LTD.

PAN NO. : AAACD8178P

TIN NP. : 22512500507

DURGA HITECH PROJ. PVT. LTD.

PAN NO. : AADCD5242K

TIN NO. : 22841802459

DURGA CONTINENTAL PVT. LTD.

PAN NO. : AACCD0712H

TIN NO. : 22841802459

DURGA GYPSUM VENTURES PVT. LTD.

DURGA CORPORATE PVT. LTD.

PAN NO. : AACCD7736R

SONADIH RAILWAY SIDING PROJECT
ANNEXURE OF LOA: L&T/ECCD/TLRC/SND-RLY/12/01

Item No.	ITEM OF WORK	UNIT	S/C SCOPE	LIPL Rate	S/C NAME: DHPPL	
					Unit Rate	Total Amount
D	Piling and Concreting in Normal Soil with Conventional Rig	RMTR	100	26818	22795	2279530
i	Boring of Pile by Conventional Rig in Normal Soil, inclusive of drilling & cutting tool and supply of fuel	RMTR	100	8533	7253	725305
ii	P&M with fuel(Hydra, Poclaim,DG, Welding Machine)	RMTR	100	1573	1337	133663
iii	Infrastructure(Labour shed, Eatch and Ward, Electricity etc.)	RMTR	100	256	218	21759
iv	Supply of liner materials	RMTR	100	5165	4390	439017
v	Liner cutting and fabrication	RMTR	100	919	781	78126
vi	Driving of liner	RMTR	100	433	368	36783
vii	Supply of cage	RMTR	100	5759	4895	489477
viii	Fabrication of cage	RMTR	100	701	596	59579
ix	Supply of concrete(M35)	RMTR	100	2749	2337	233652
x	Labour Charges for piling with Conventional Rig	RMTR	100	388	329	32950
xi	Safety Charges	RMTR	100	67	57	5699
xii	Piling supervisor and expertise for Conventional Rig	RMTR	100	277	235	23521
5	Pile Chipping	RMTR	462	2337	1986	917740
6	Dowell Fixing	Nos	2200	425	361	794750
7	Rock Excavation	Cum	6000	750	637.50	3825000
Total Amount of Work Order						61229102

Note: Recoveries for materials, tools tackles, labours, plant machineries and overheads shall be done as per consumption records maintained with L&T on item rate basis.



COMPANIES :

DURGA CARRIERS PVT. LTD.
PAN NO. : AAACD8178P
TIN NP. : 22512500507

DURGA HITECH PROJ. PVT. LTD.
PAN NO. : AADC05242K
TIN NO. : 22841802459

DURGA CONTINENTAL PVT. LTD.
PAN NO. : AACCD0712H
TIN NO. : 22841802459

DURGA GYPSUM VENTURES PVT. LTD.
DURGA CORPORATE PVT. LTD.
PAN NO. : AACCD7736R

SONADIH RAILWAY SIDING PROJECT
ANNEXURE OF LOA: L&T/ECCD/TLRC/SND-RLY/12/01

Sl. No.	ITEM OF WORK	UNIT	S/C SCOPE	LIPL Rate	S/C NAME: DHPPL	
					Unit Rate	Total Amount
1	A Pilling and Concreting in Rocky Strata with Hydraulic Rig	RMTR	800	48118	40900	32719959
	i Boring of Pile by Hydraulic Rig in Rocky Strata, inclusive of drilling & cutting tool and supply of fuel	RMTR	800	28037	23831	19065160
	ii P&M with fuel(Hydra, Poclaim,DG, Welding Machine)	RMTR	800	3145	2673	2138614
	iii Infrastructure(Labour shed, Eatch and Ward, Electricity etc.)	RMTR	800	256	218	174073
	iv Supply of liner materials	RMTR	800	5165	4390	3512134
	v Liner cutting and fabrication	RMTR	800	919	781	625006
	vi Driving of liner	RMTR	800	433	368	294267
	vii Supply of cage	RMTR	800	5759	4895	3915818
	viii Fabrication of cage	RMTR	800	701	596	476629
	ix Supply of concrete(M35)	RMTR	800	2749	2337	1869215
	x Labour Charges for pilling with Hydraulic Rig	RMTR	800	518	440	352291
	xi Safety Charges	RMTR	800	67	57	45591
	xii Pilling supervisor and expertise for Hydraulic Rig	RMTR	800	369	314	251163
2	B Pilling and Concreting in Rocky Strata with Conventional Rig	RMTR	400	38809	32988	13195163
	i Boring of Pile by Conventional Rig in Rocky Strata, inclusive of drilling & cutting tool and supply of fuel	RMTR	400	18285	15542	6216900
	ii P&M with fuel(Hydra, Poclaim,DG, Welding Machine)	RMTR	400	3145	2673	1059307
	iii Infrastructure(Labour shed, Eatch and Ward, Electricity etc.)	RMTR	400	256	218	87037
	iv Supply of liner materials	RMTR	400	5165	4390	1756067
	v Liner cutting and fabrication	RMTR	400	919	781	312503
	vi Driving of liner	RMTR	400	433	368	147133
	vii Supply of cage	RMTR	400	5759	4895	1957908
	viii Fabrication of cage	RMTR	400	701	596	238315
	ix Supply of concrete(M35)	RMTR	400	2749	2337	934607
	x Labour Charges for pilling with Conventional Rig	RMTR	400	777	660	264011
	xi Safety Charges	RMTR	400	67	57	22795
	xii Pilling supervisor and expertise for Conventional Rig	RMTR	400	555	471	188579
3	C Pilling and Concreting in Normal Soil with Hydraulic Rig	RMTR	300	29400	24990	7496960
	i Boring of Pile by Hydraulic Rig in Normal Soil, inclusive of drilling & cutting tool and supply of fuel	RMTR	300	11337	9636	2890859
	ii P&M with fuel(Hydra, Poclaim,DG, Welding Machine)	RMTR	300	1573	1337	400990
	iii Infrastructure(Labour shed, Eatch and Ward, Electricity etc.)	RMTR	300	256	218	65277
	iv Supply of liner materials	RMTR	300	5165	4390	1317050
	v Liner cutting and fabrication	RMTR	300	919	781	234377
	vi Driving of liner	RMTR	300	433	368	110350
	vii Supply of cage	RMTR	300	5759	4895	1468432
	viii Fabrication of cage	RMTR	300	701	596	178736
	ix Supply of concrete(M35)	RMTR	300	2749	2337	700955
	x Labour Charges for pilling with Hydraulic Rig	RMTR	300	258	220	65893
	xi Safety Charges	RMTR	300	67	57	17096
	xii Pilling supervisor and expertise for Hydraulic Rig	RMTR	300	184	156	46938

COMPANIES :

DURGA CARRIERS PVT. LTD.
 PAN NO. : AAACD8178P
 TIN NP. : 22512500507

DURGA HITECH PROJ. PVT. LTD.
 PAN NO. : AACD05242K
 TIN NO. : 22841802459

DURGA CONTINENTAL PVT. LTD.
 PAN NO. : AACCD0712H
 TIN NO. : 22841802459

DURGA GYPSUM VENTURES PVT. LTD.
DURGA CORPORATE PVT. LTD.
 PAN NO. : AACCD7736R



LARSEN & TOUBRO LIMITED

ECC DIVISION (ENGINEERING, CONSTRUCTION & CONTRACTS)

Headquarters: Mount Poonamallee Road, Manapakkam, P.B.No.979, Chennai – 600 089, Tel.: 2252 6000 / 2252 8000 Fax: +044 2249 5096

Letter No: L&T/ECCD/TLRC/SND-RLY/12/01

Date. 28.12.2011

To,
M/S Durga Hitech Project Pvt. Ltd.,
Sonadih, Chatisgarh

Sub. : Letter of Intent for Pilling Works
Ref.: Quotation submitted by you

Dear Sir,

With reference to the above and subsequent discussions held with you, M/S Larsen and Toubro Limited is pleased to issue the Letter of Intent to you for the subject work as per the detail mentioned in the attached annexure.

The contract stands valid based on the mutual acceptance that you abide by the general terms and conditions as per LIPL original contract for Sonadih Railway Siding Project and Phase I LOI (ref: LTCD/RCBU/KVS/LOI/DHPPL/1011/014 Dated: 1st Sept'2010).

Kindly sign the duplicate copy of the LOI and send to us as a token of your acceptance.

Thanking you,

Yours Faithfully,
For Larsen & Toubro Limited
ECC Division
(M. Daskar)
Project Manager
Sonadih, Chatisgarh

Received & Accepted
For Durga Hi-Tech Project Private Limited

(Director)

Encl: 1) Details of the pile i.e. rate etc.
2) Copy of LIPL rate approval.

Cc: PJR / HQ
Cc: KP / KKRO

Regd. Office: L&T House, Ballard Estate, P.O. Box 278, Mumbai – 400 001. Tel.:261 8181 / 82 Fax: +022-262 0223
Website: www.larsentoubro.com

COMPANIES :

DURGA CARRIERS PVT. LTD.
PAN NO. : AAACD8178P
TIN NP. : 22512500507

DURGA HITECH PROJ. PVT. LTD.
PAN NO. : AADC05242K
TIN NO. : 22841802459

DURGA CONTINENTAL PVT. LTD.
PAN NO. : AACCD0712H
TIN NO. : 22841802459

DURGA GYPSUM VENTURES PVT. LTD.
DURGA CORPORATE PVT. LTD.
PAN NO. : AACCD7736R

	TxR Building	2,585,182
	S&T Building	3,078,854
	Loco Shed	4,002,724
	Staff Qtrs	5,870,585
	Gate Lodge	1,414,563
5	OVER HEAD ELECTRIFICATION	
	Supply	64,724,074
	Erection	8,342,147
6	SIGNALLING WORK	
	Supply	43,021,286
	Erection	7,996,238
7	TELECOM WORK	
	Supply	17,261,159
	Erection	7,220,867
8	Liaison charge with SECR towards all the design and drawing approval	400,000
		356,594,899

Amt in Rs

(3) The payment terms shall be as given below:

- 10% of the order value as interest free advance against submission of Bank Guarantee.
- 80% of payment against certified monthly running invoice subject to certification by Authorised PMC of Lafarge and Site Incharge of LIPL.
- 10% of the total order value against completion of work in all respects subject to submission of Performance Bank Guarantee for 10% of order value as per Lafarge format valid till completion of maintenance period along with Railway acceptance Certification.

An additional amount of 2.5% of the invoices shall be retained which will be released after integrated completion of total project.

All the above payments will be cleared on receipt of respective stage payment from Lafarge.

- The landed cost of PWAY and S&T materials ordered by L&T till date shall be deducted from the invoices of DHPPL.

Di/bes

For, DURGA HITECH PROJECTS PVT.LTD

Ajay Agrawal
AJAY AGRAWAL
DIRECTOR

COMPANIES :

DURGA CARRIERS PVT. LTD.
PAN NO. : AAACD8178P
TIN NP. : 22512500507

DURGA HITECH PROJ. PVT. LTD.
PAN NO. : AADC05242K
TIN NO. : 22841802459

DURGA CONTINENTAL PVT. LTD.
PAN NO. : AACCD0712H
TIN NO. : 22841802459

DURGA GYPSUM VENTURES PVT. LTD.
DURGA CORPORATE PVT. LTD.
PAN NO. : AACCD7736R

- 6) The design & drawing of OHE and S&T will be under L&T scope, but the responsibility of getting the same approved by SECR lies with DHPPL.
- 7) Any extra works to be executed shall be carried out by DHPPL @ 85% of the rates to be finalized by Lafarge.
- 8) All terms and conditions of Lafarge Contract on L&T will apply for this work order and DHPPL will carry out the work strictly as per technical specifications and scope of work of Lafarge.

This may please be treated as our Letter of Intent and a formal work order with detailed scope of work and terms & conditions will follow shortly.

Please acknowledge receipt of this Letter of Intent.

Thanking you,

Yours faithfully

for **LARSEN & TOUBRO LIMITED**
ECC DIVISION

Dejbas
(P. JOHN RAJKUMAR)
General Manager - Railway Projects

For. DURGA HITECH PROJECTS PVT.LTD.

Ajay Agrawal
AJAY AGRAWAL
DIRECTOR

COMPANIES :

DURGA CARRIERS PVT. LTD.
PAN NO. : AAACD8178P
TIN NP. : 22512500507

DURGA HITECH PROJ. PVT. LTD.
PAN NO. : AADCD5242K
TIN NO. : 22841802459

DURGA CONTINENTAL PVT. LTD.
PAN NO. : AACCD0712H
TIN NO. : 22841802459

DURGA GYPSUM VENTURES PVT. LTD.
DURGA CORPORATE PVT. LTD.
PAN NO. : AACCD7736R



LARSEN & TOUBRO LIMITED

ENGINEERING, CONSTRUCTION & CONTRACTS DIVISION

Headquarters : Mount Poonamallee Road, Manapakkam, P.B. No. 979, Chennai - 600 089. Tel. : 2252 6000 / 2252 8000 Fax : +044-2249 3317

Ref. : LTCD/RCBU/PJR/LOI/DHPPL/PH2/01 Dated 5th March 2011
E-mail : pjr@lntec.com

Website : www.lntec.com
www.larsentoubro.com

M/s. Durga Hitech Projects Private Limited
B-3, Sector-3, Devendra Nagar
In Front of Heritage Hospital
RAJPUR - 492 001
Chhattisgarh

Kind Attn: Mr Ajay Agarwal, Director

Dear Sir,

Sub: Procurement of Permanent Way materials, Linking of Permanent Way, Procurement of Ballast, Construction of buildings and Supply. Erection, Testing & Commissioning of OHE & S&T for Railway Siding work for Lafarge Cement Plant at Sonadih - Reg.

Ref: Your Offer Dated 05.03.11

With reference to your above offer, we are pleased to place our Letter of Intent on you for the Procurement of Permanent Way materials, Linking of Permanent Way, Procurement of Ballast, Construction of buildings and Supply. Erection, Testing & Commissioning of OHE & S&T for the Railway Siding package work from Nipania Station of South Eastern Railway to Sonadih Plant of Lafarge India Pvt. Ltd. as per details given below:

- (1) Scope: Procurement of Permanent Way materials, Linking of Permanent Way, Procurement of Ballast, Construction of buildings and Supply. Erection, Testing & Commissioning of OHE & S&T as per the technical specifications/scope of work as in the contract between Lafarge India and L&T on back to back basis.
- (2) Price: The total order price for the above works shall be Rs.35.66 Cr.
The item wise break up is as follows:

Sche	Description of Work	DHPPL Pricing
1	SUPPLY OF P.WAY MATERIAL	131,512,972
2	LINKING OF TRACK	26,027,564
3	SUPPLY OF BALLAST	33,136,684
4	BUILDINGS	

Regd. Off : L&T House, Ballard Estate, P.O. Box 278, Mumbai - 400 001 Phone : 2268 5656 • Fax : +022-2268 5858

For, DURGA HITECH PROJECTS PVT.LTD.

5/2/11
AJAY AGRAWAL
DIRECTOR

COMPANIES :

DURGA CARRIERS PVT. LTD.
PAN NO. : AAACD8178P
TIN NP. : 22512500507

DURGA HITECH PROJ. PVT. LTD.
PAN NO. : AADCD5242K
TIN NO. : 22841802459

DURGA CONTINENTAL PVT. LTD.
PAN NO. : AACCD0712H
TIN NO. : 22841802459

DURGA GYPSUM VENTURES PVT. LTD.
DURGA CORPORATE PVT. LTD.
PAN NO. : AACCD7736R



LARSEN & TOUBRO LIMITED

ENGINEERING, CONSTRUCTION & CONTRACTS DIVISION

Headquarters : Mount Poonamallee Road, Manapakkam, P.B. No. 979, Chennai - 600 089. Tel. : 2252 6000 / 2252 8000 Fax : +044-2249 3317

Ref. : LTCD/RCBU/PJR/LOI/DHPPL/PH2/01 Dated 5th March 2011
E-mail : pjr@lntec.com

Website : www.lntec.com
www.larsentoubro.com

M/s. Durga Hitech Projects Private Limited
B-3, Sector-3, Devendra Nagar
In Front of Heritage Hospital
RAJPUR - 492 001
Chhattisgarh

Kind Attn: Mr Ajay Agarwal, Director

Dear Sir,

Sub: Procurement of Permanent Way materials, Linking of Permanent Way, Procurement of Ballast, Construction of buildings and Supply. Erection, Testing & Commissioning of OHE & S&T for Railway Siding work for Lafarge Cement Plant at Sonadih - Reg.

Ref: Your Offer Dated 05.03.11

With reference to your above offer, we are pleased to place our Letter of Intent on you for the Procurement of Permanent Way materials, Linking of Permanent Way, Procurement of Ballast, Construction of buildings and Supply. Erection, Testing & Commissioning of OHE & S&T for the Railway Siding package work from Nipania Station of South Eastern Railway to Sonadih Plant of Lafarge India Pvt. Ltd. as per details given below:

- (1) Scope: Procurement of Permanent Way materials, Linking of Permanent Way, Procurement of Ballast, Construction of buildings and Supply. Erection, Testing & Commissioning of OHE & S&T as per the technical specifications/scope of work as in the contract between Lafarge India and L&T on back to back basis.
- (2) Price: The total order price for the above works shall be Rs.35.66 Cr. The item wise break up is as follows:

Sche	Description of Work	DHPPL Pricing
1	SUPPLY OF P.WAY MATERIAL	131,512,972
2	LINKING OF TRACK	26,027,564
3	SUPPLY OF BALLAST	33,136,684
4	BUILDINGS	

Date

Received

For, DURGA HITECH PROJECTS PVT.LTD.

Regd. Off : L&T House, Ballard Estate, P.O. Box 278, Mumbai - 400 001 Phone : 2268 5656 • Fax : +022-2268 5858

Signature
AJAY AGRAWAL
DIRECTOR
5/3/11

COMPANIES :

DURGA CARRIERS PVT. LTD.
PAN NO. : AAACD8178P
TIN NP. : 22512500507

DURGA HITECH PROJ. PVT. LTD.
PAN NO. : AADC05242K
TIN NO. : 22841802459

DURGA CONTINENTAL PVT. LTD.
PAN NO. : AACCD0712H
TIN NO. : 22841802459

DURGA GYPSUM VENTURES PVT. LTD.
DURGA CORPORATE PVT. LTD.
PAN NO. : AACCD7736R

THANK YOU

For any Clarification & query

Please contact

Mr: Sudhir Agrawal

Mob:9977733333

Email: sudhir@dcpl.org

COMPANIES :

DURGA CARRIERS PVT. LTD.
PAN NO. : AAACD8178P
TIN NP. : 22512500507

DURGA HITECH PROJ. PVT. LTD.
PAN NO. : AADC05242K
TIN NO. : 22841802459

DURGA CONTINENTAL PVT. LTD.
PAN NO. : AACCD0712H
TIN NO. : 22841802459

GURGA GYPSUM VENTURES PVT. LTD.
DURGA CORPORATE PVT. LTD.
PAN NO. : AACCD7736R